

INSTALLATION INSTRUCTIONS

NUDGE BAR BRACKETS FOR GREAT WALL CANNON

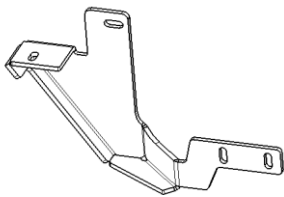
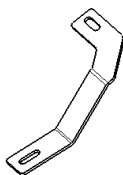


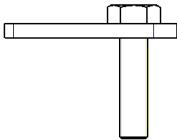
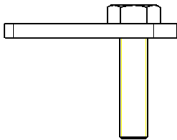
Before Installation

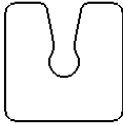
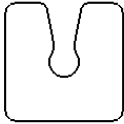
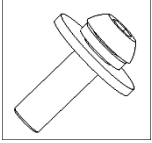
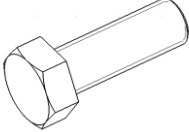
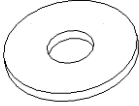
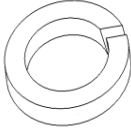

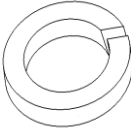
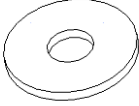


- Please read the instruction completely for easy installation, which will also help you to avoid scratches or other potential damages to your appealing car.
- The information shown here is for reference only and may differ from the product that you receive, however the goods are fitted in the same way.

Care and Cleaning

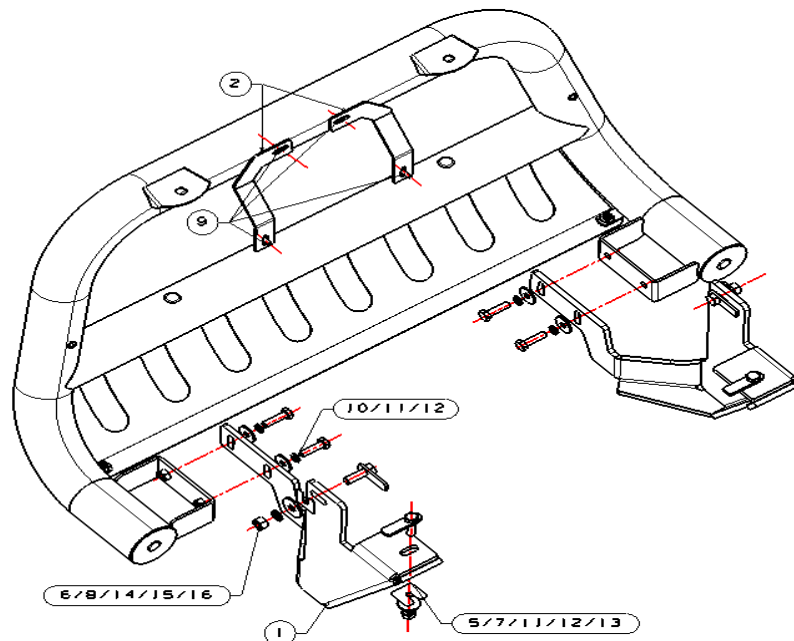
- Mild soap may be used also to clean the Product.
- Please periodically check and retighten all the hardware and clean the investment for a refresh look.

Parts list

NO.	QTY	PICTURE	NO.	QTY	PICTURE
①	2	 Bracket(L/R)	②	2	 Support Bracket(L/R)
③	1	 M10 Spring helical wire	④	1	 M12 Spring helical wire
⑤	2	 T-bolt M10	⑥	2	 T-bolt M12

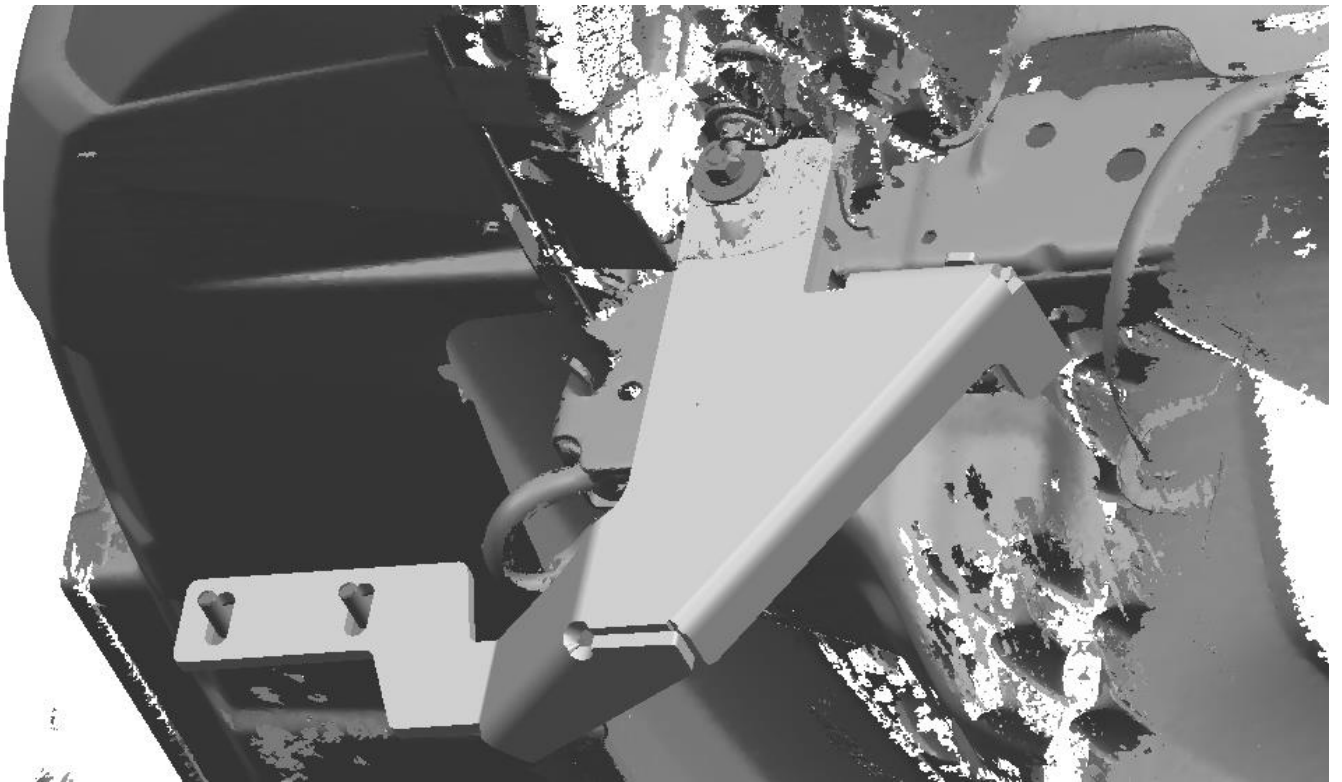
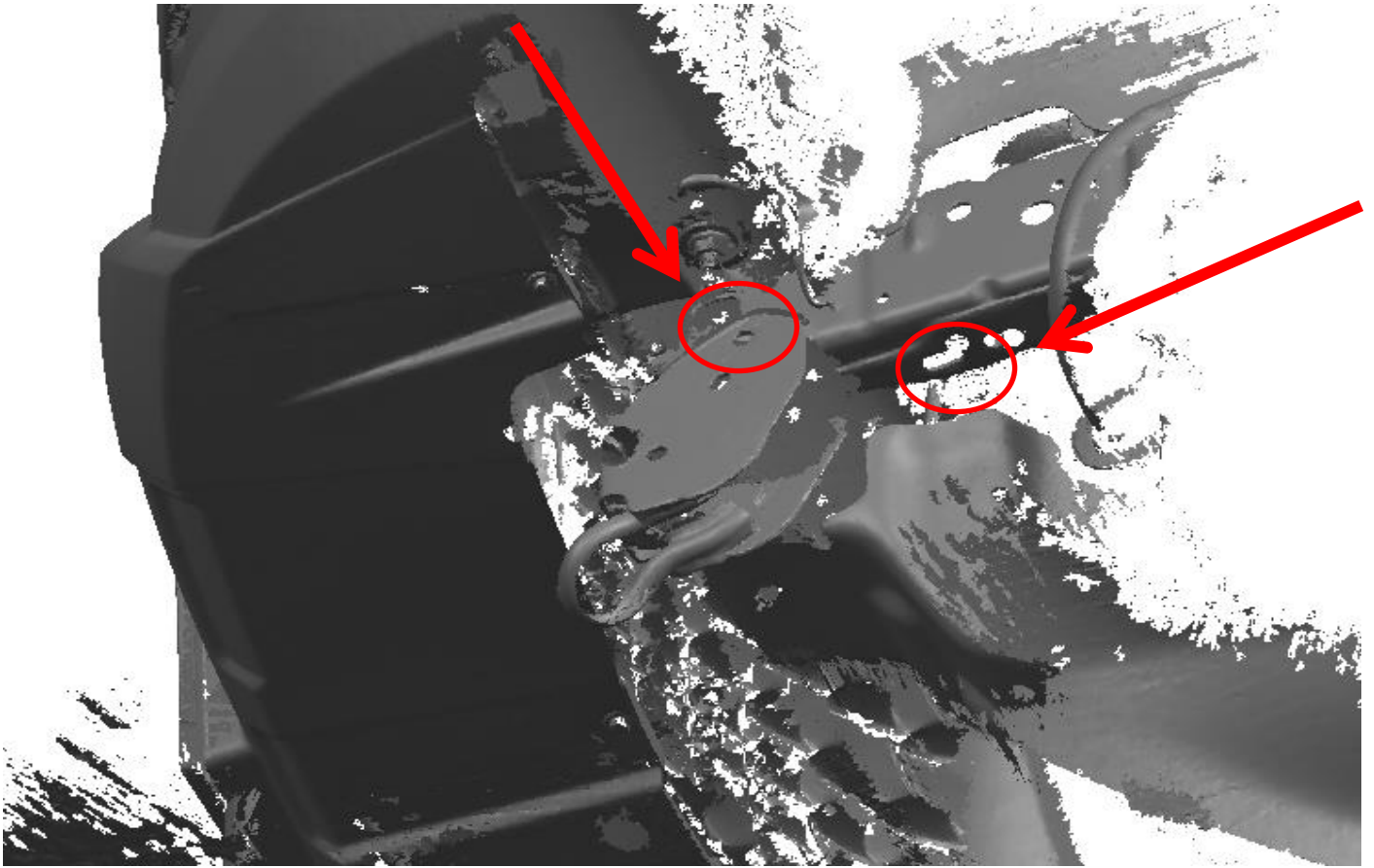
⑦	2		⑧	2	
		M10 PVC block			M12 PVC block
⑨	4		⑩	4	
		Bolt assembly M6			Hex bolt M10-35
⑪	6		⑫	6	
		Large washer D10			Spring washer D 10
⑬	2		⑭	2	
		Hex Nut M10			Spring washer D 12
⑮	2		⑯	2	
		Large washer D12			Hex Nut M 12
⑰	1				
		Allen wrench S=4			

Installation Fig.

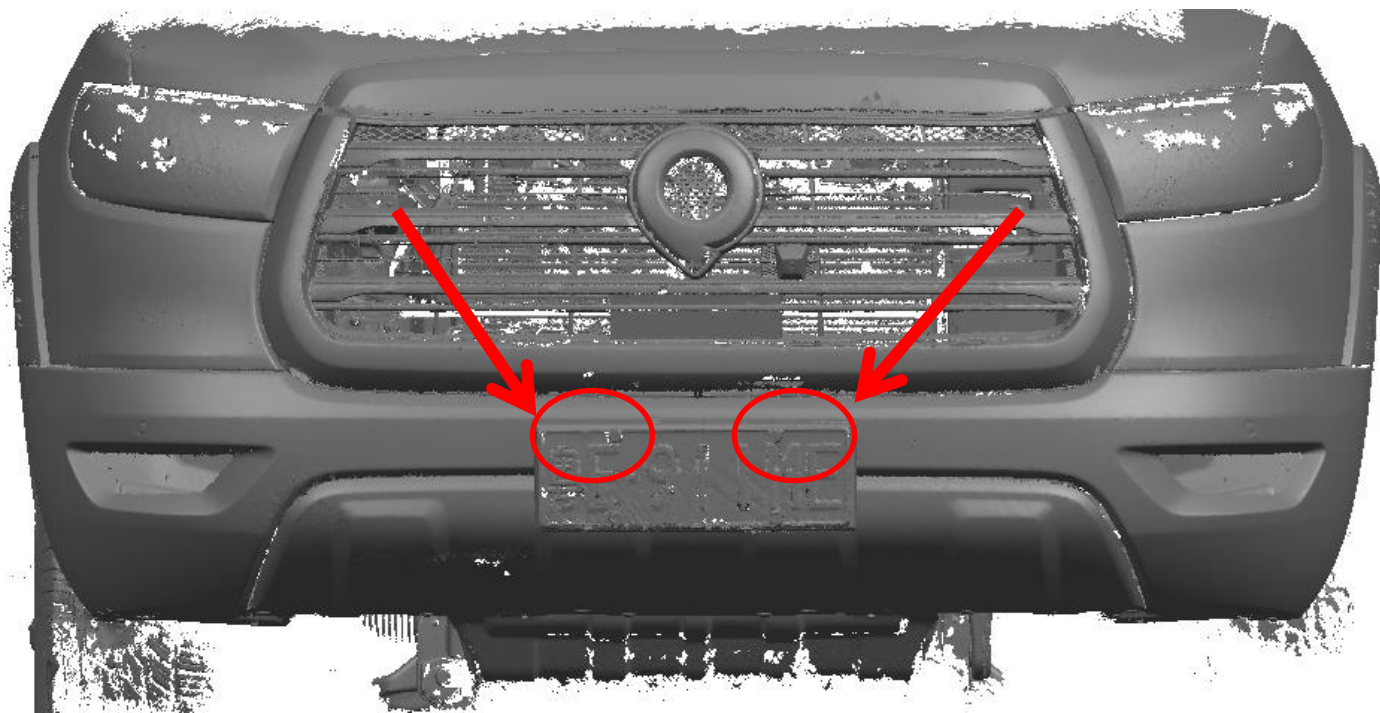


Installation Steps

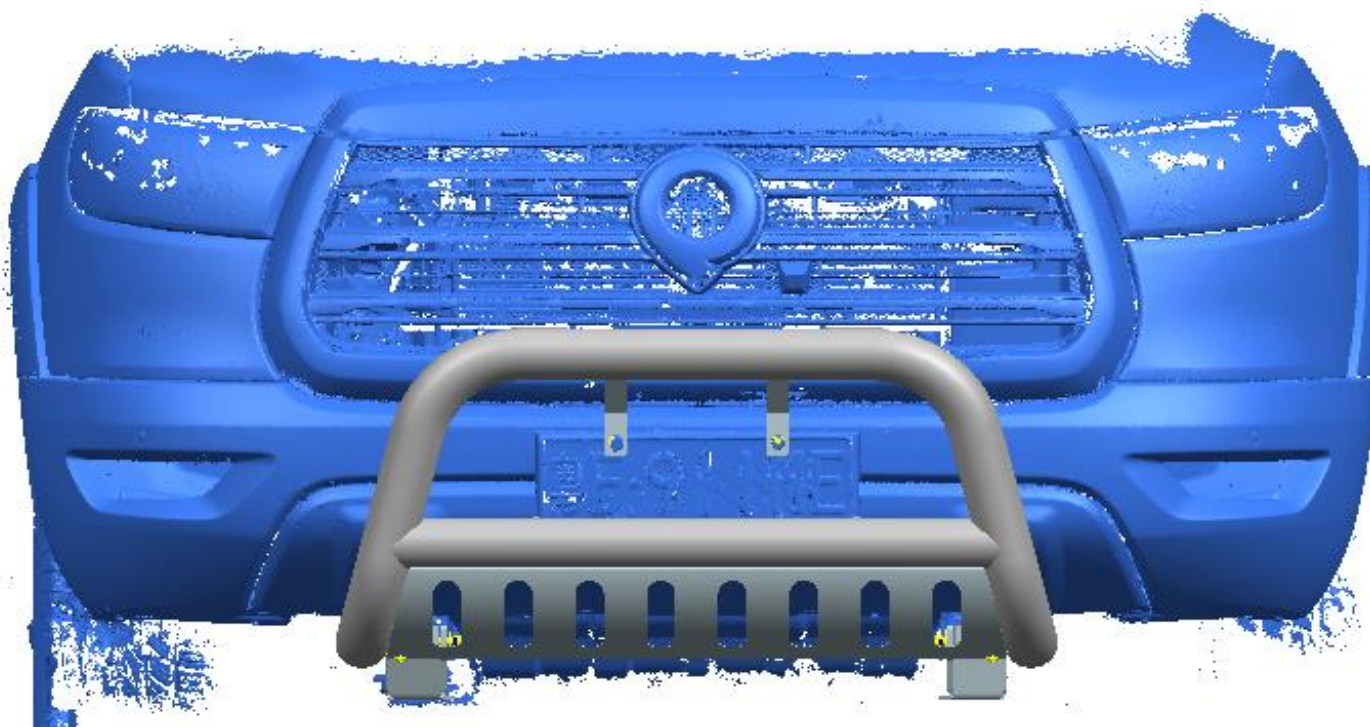
The ① Bracket(L/R) installation point as shown in the below and install the bracket by ③ ④



The connection point between the ②Support Bracket(L/R) and the vehicle is shown in the below:



Installation is finished, pick up all tools.



NOTE

Any damages and losses caused by improper installation and application, goes beyond our quality warranty.