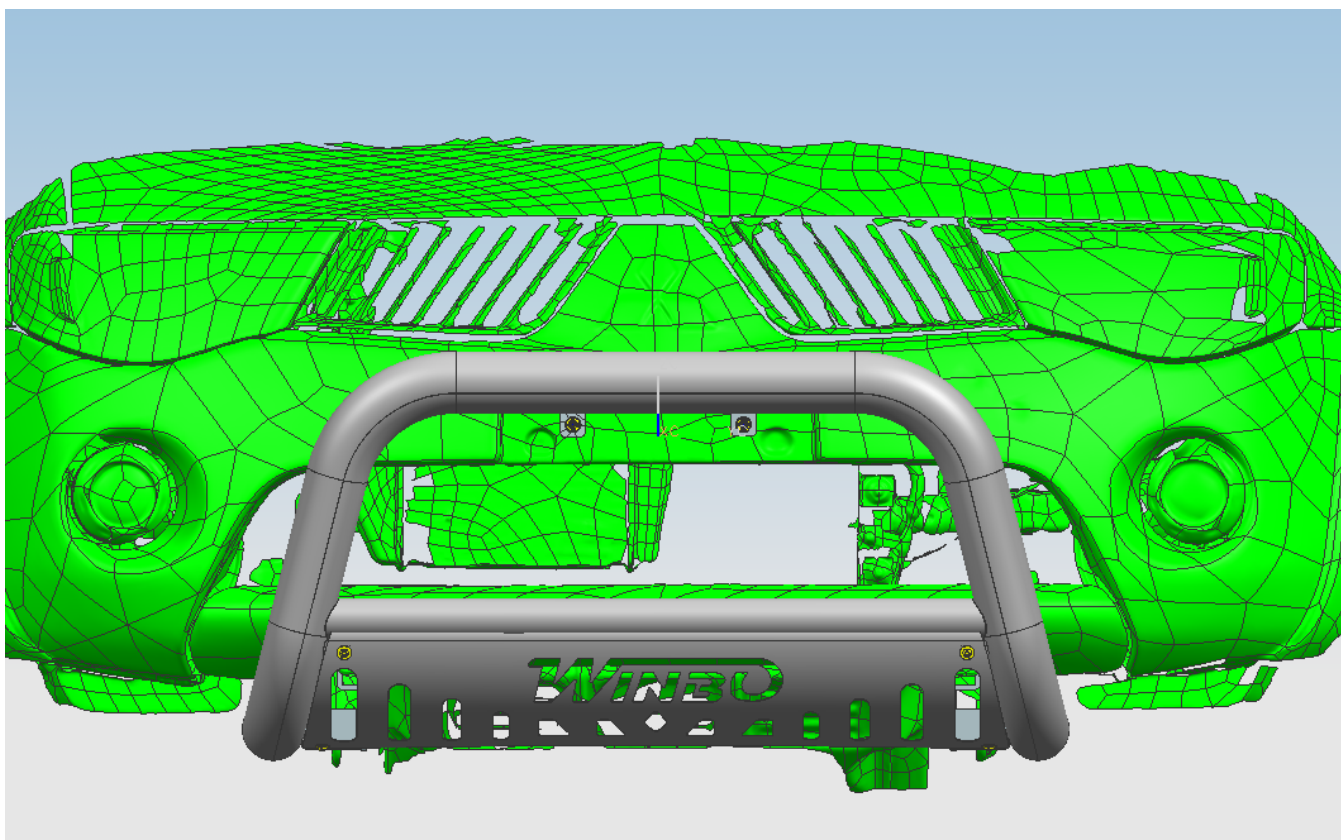


INSTALLATION INSTRUCTIONS

Black Nudge Bar suitable for Mitsubishi Challenger 2009-2016

Before Installation

- Please read the instructions completely and carefully
- The figures here are for reference only and may have differences with the actual product you receive, however they share the same method of assembly.



Care and Cleaning

- Mild soap may be used to clean the product.
- Please periodically check and retighten all hardware to ensure maximum life and durability.

Parts list

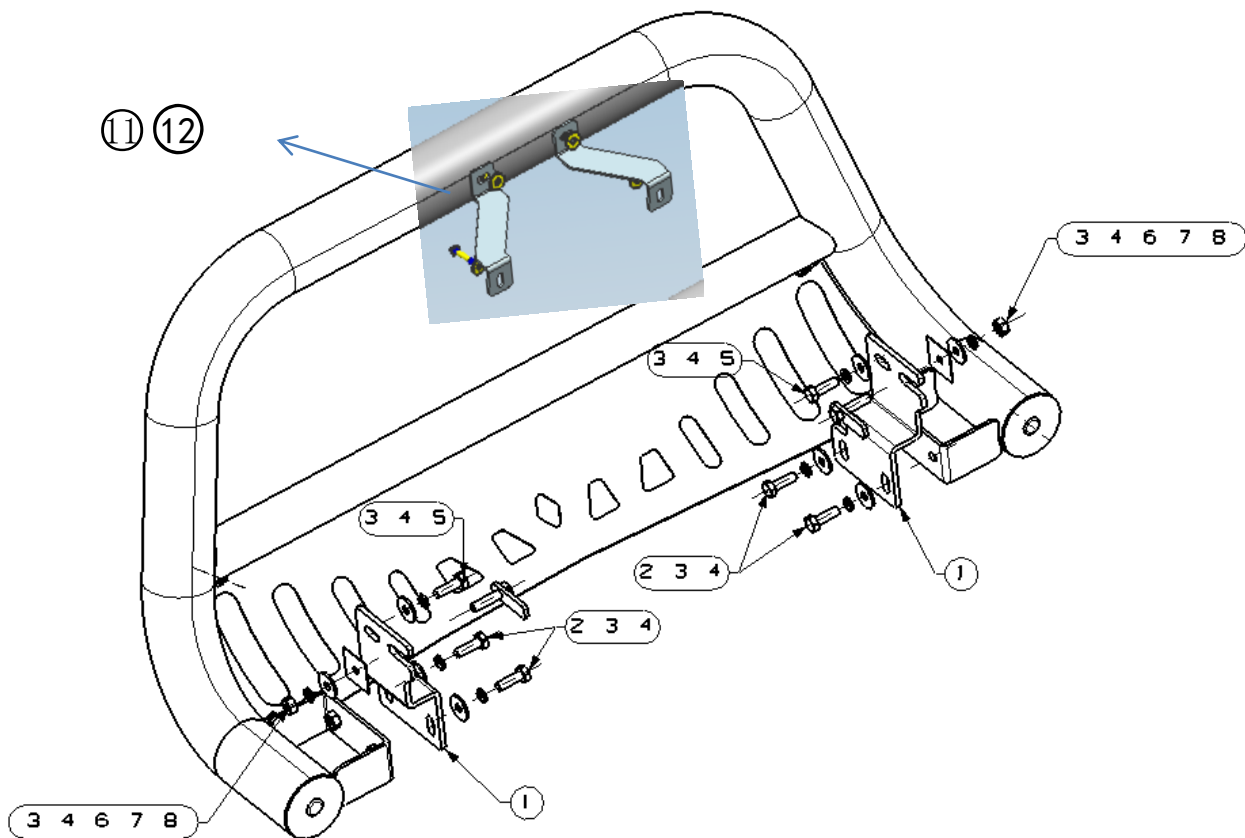
INSTALLATION INSTRUCTIONS

NO.	QTY	PIC	NO.	QTY	PIC
①	2	A blue L-shaped metal bracket with two mounting holes on the vertical flange and one on the horizontal flange. Mount bracket (L&R)	②	4	A black hexagonal bolt with a hexagonal head. Hex bolt M10-30
③	8	A grey circular washer with a central hole. Large washer D10(10x30x2.5mm)	④	8	A grey split lock washer with a central hole. Lock washer D10
⑤	2	A black hexagonal bolt with a hexagonal head and a threaded section. Hex bolt M10-30 (fin thread)	⑥	2	A grey T-shaped bolt with a hexagonal head and a threaded section. T-bolt M10
⑦	2	A grey square plastic plate with a central hole. Plastics plate D10	⑧	2	A grey hexagonal nut with a hexagonal base. Hex nut M10
⑨	1	A blue L-shaped metal bracket with two mounting holes on the vertical flange and one on the horizontal flange. Left Connecting Bracket	⑩	1	A blue L-shaped metal bracket with two mounting holes on the vertical flange and one on the horizontal flange. Right Connecting Bracket
⑪	2	A yellow hexagonal bolt with a hexagonal head and a threaded section. Hex bolt M6_25	⑫	4	A yellow circular flat washer with a central hole. Flat washer D6

Installation Steps

INSTALLATION INSTRUCTIONS

Installation diagram



Install the grille guard and brackets to the vehicle following the installing diagram above.

NOTE

Any damage and loss caused by improper installation or use are not included in the scope of our quality warranty.