



Accessory Part No: 217816 TRITON

INSTALLATION INSTRUCTIONS MQ Triton Roller shutter

ACCESSORY PART NO: 217816 TRITON

Installation Time: 4 hrs

Please read all the information in this document carefully to avoid any errors or confusion during installation.

The goods you receive may have minor differences than shown in this document. However, the installation process is still the same and is useful for reference.

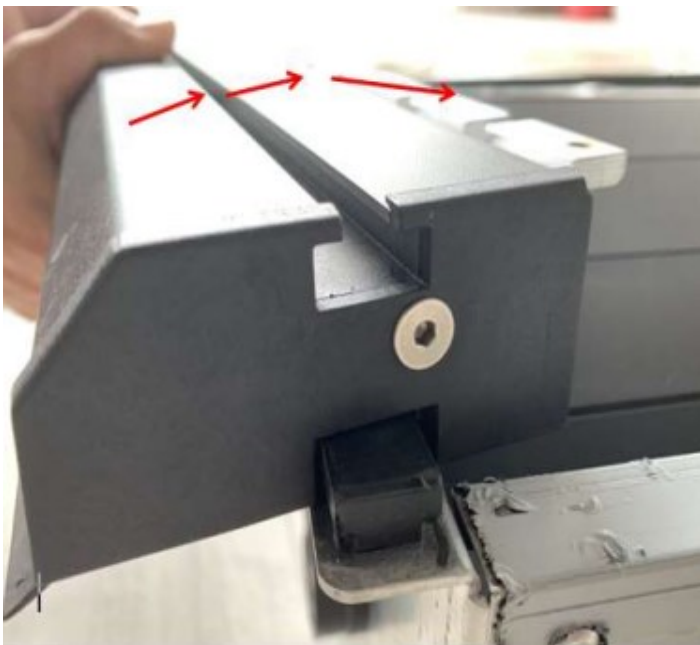
Before commencing with fitment, carefully unwrap the product and ensure that the kit is complete and that the part is free of damage

Care and Cleaning

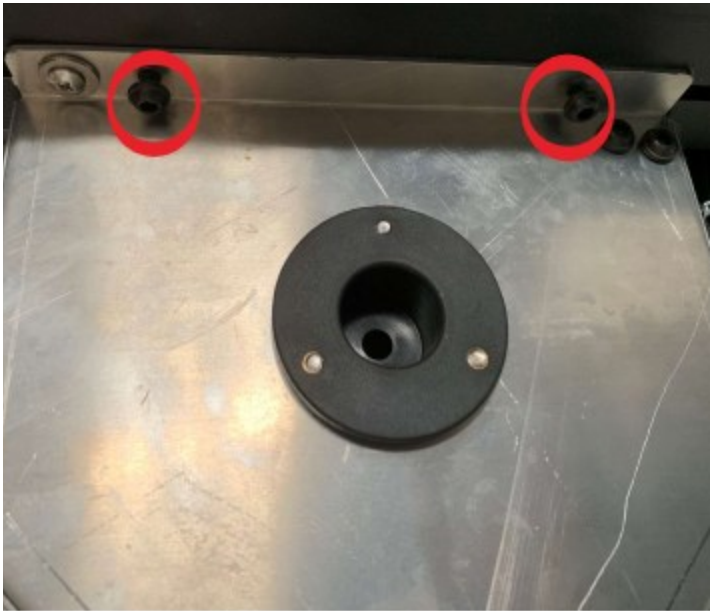
Ensure that your workmanship is of highest professional standard and that you do not scratch or damage the vehicle or accessory to be fitted.



Remove Roller Shutter and parts from box.



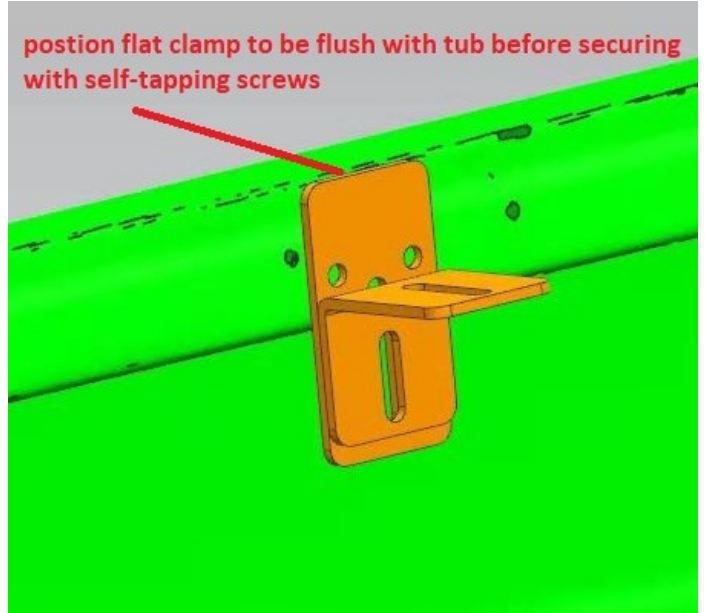
After fixing the horizontal side rail, install the rubber cover of the front end of the side track.



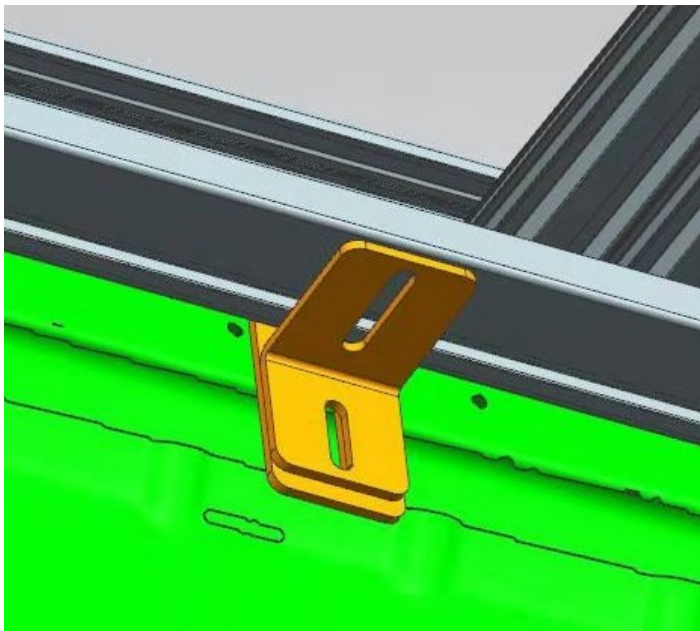
Secure side rails to Roller Shutter box with supplied screws & install top cover.



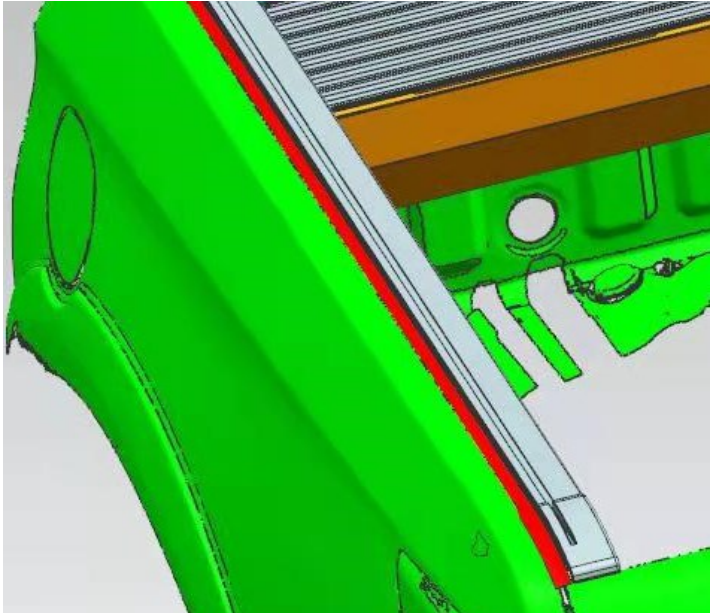
Use self tapping screws to secure Aluminium bar to headboard.
Drill front & rear drain holes (remove rear tail lights before drilling).



Place T bolt into side rail underside channel.
Install side rail Flat & L brackets as per photo



Place Roller Shutter into position with the assistance of another, having the side rails sitting on the installed L brackets.



Once in place the side arm rubber will be overlapping the tub side rail. Align Roller Shutter into position with aluminum bar.



Connect drain hoses to Roller Shutter & secure into place with hose clamps. Feed drain hose outlet through drilled drain holes.