



LANDCRUISER 70 SERIES

August 2016 Production Onwards
ACRYLIC BONNET PROTECTOR
Installation Instructions

Accessory Part No. 233547

Installation Time: Approx. 30 mins

Place these instructions in vehicle's glove box after installation is complete

Care Instructions:



Do not slam bonnet.



Clean Bonnet Protector with a mild detergent and water solution.



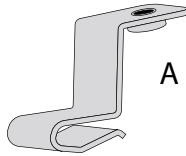
Do not use automatic car wash.



Do not use abrasive, spirit or solvent based cleaners.

Item	Component Name	Qty
1	Bonnet Protector	1
2	Push-on Metal Clip	2
	Self Tapping Screw	3
	Small Screw	2
	Fibre Washer	5
	Screw Plug	3
	Anti-Abrasive Tape	2

Item	Qty		Item	Qty	
A	2	Push-on Metal Clip	F	2	Anti-Abrasive Tape
B	3	Screw Plug			
C	2	Small Screw			
D	3	Self Tapping Screw			
E	5	Fibre Washer			



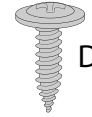
A



B



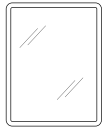
C



D



E



F

FITTING KIT
233547

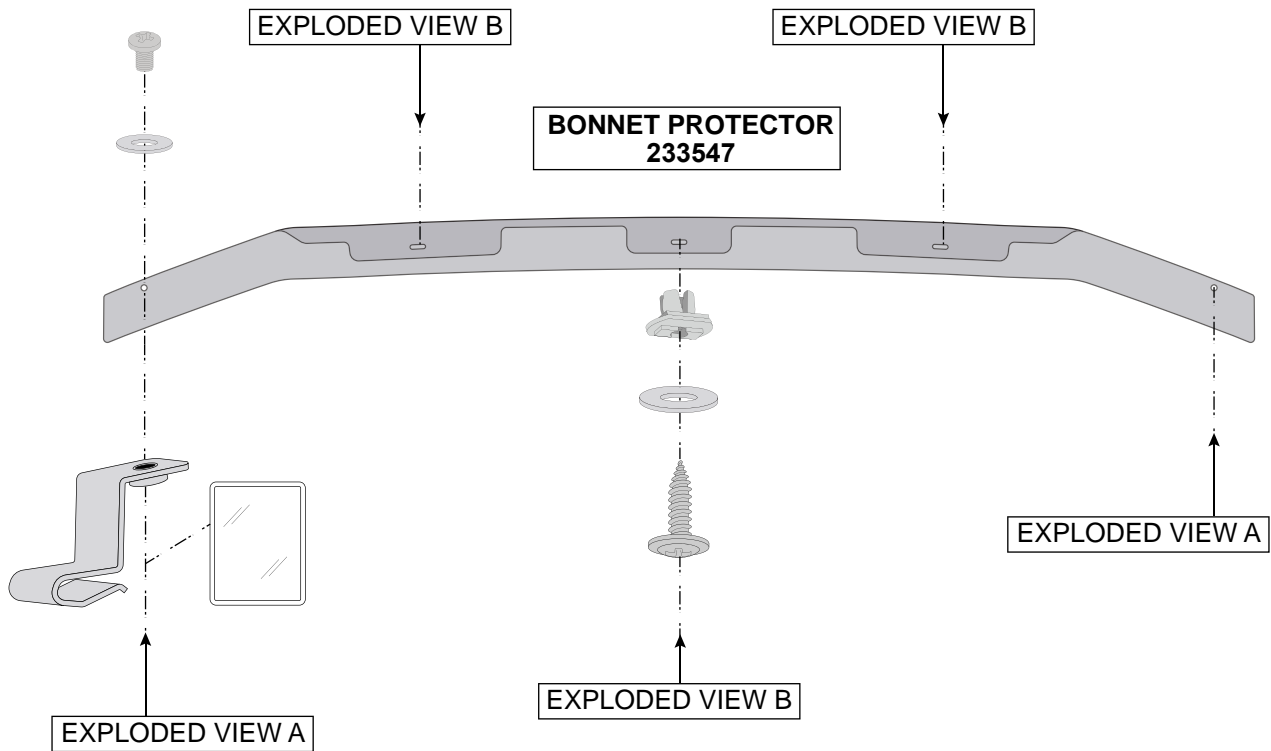


IMAGE IS FOR REFERENCE ONLY

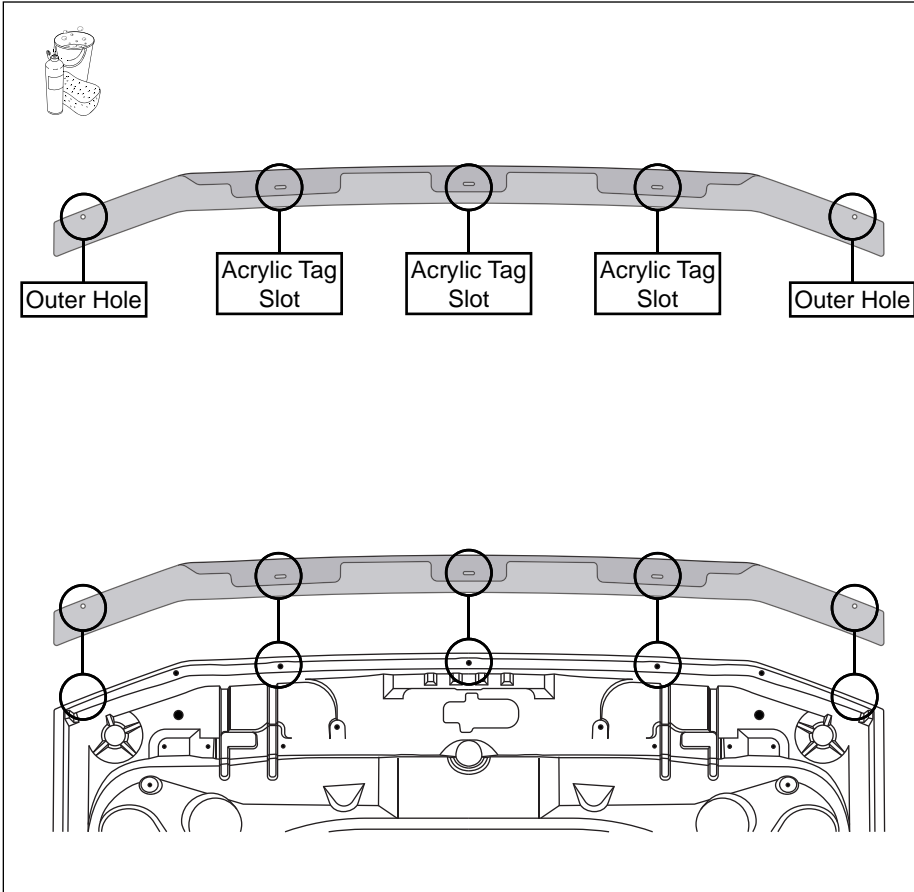


Diagram #: 1

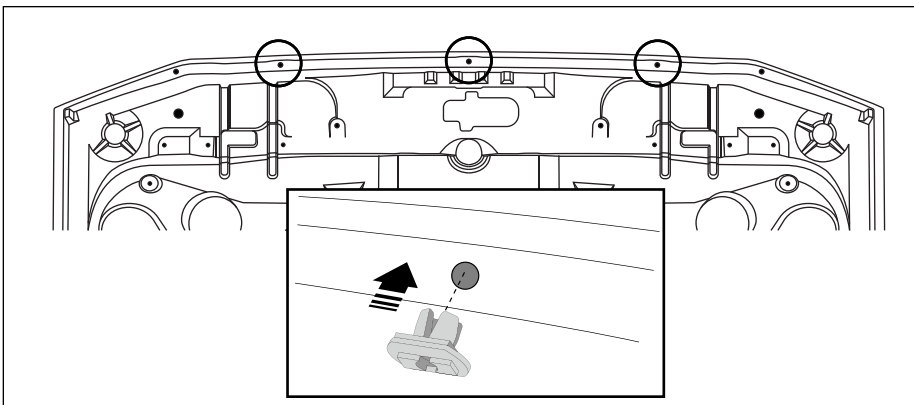


Diagram #: 2

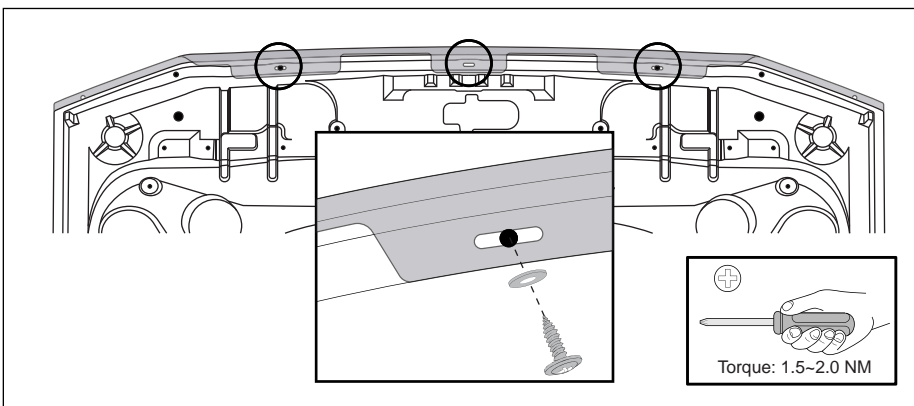


Diagram #: 3

1. Read installation instructions thoroughly before commencing installation.

Open and thoroughly clean and dry the bonnet.

Trial fit the bonnet protector centrally onto bonnet.

Note where three acrylic tag slots in the Bonnet Protector correspond with the holes in the underside of the bonnet.

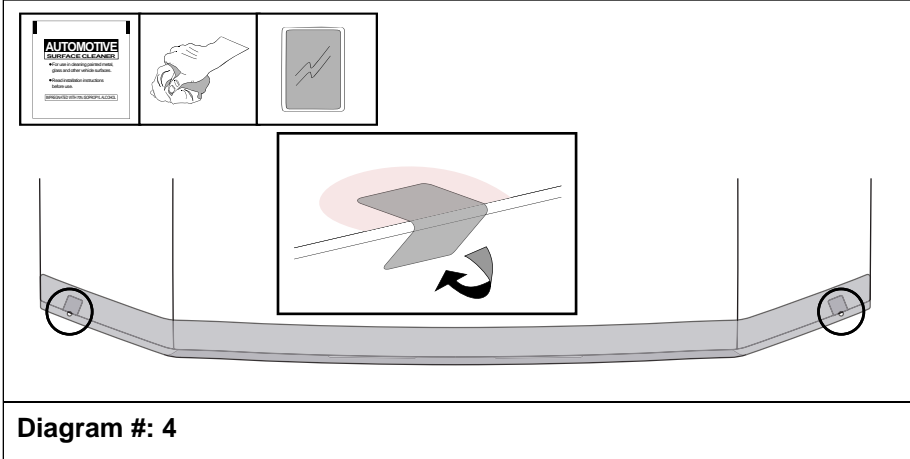
Note where the outer hole positions in the Bonnet Protector correspond with the bonnet lip.

Remove Bonnet Protector.
See Dia #1.

2. Fit the three screw plugs into the vacant holes in the bonnet.
See Dia #2.

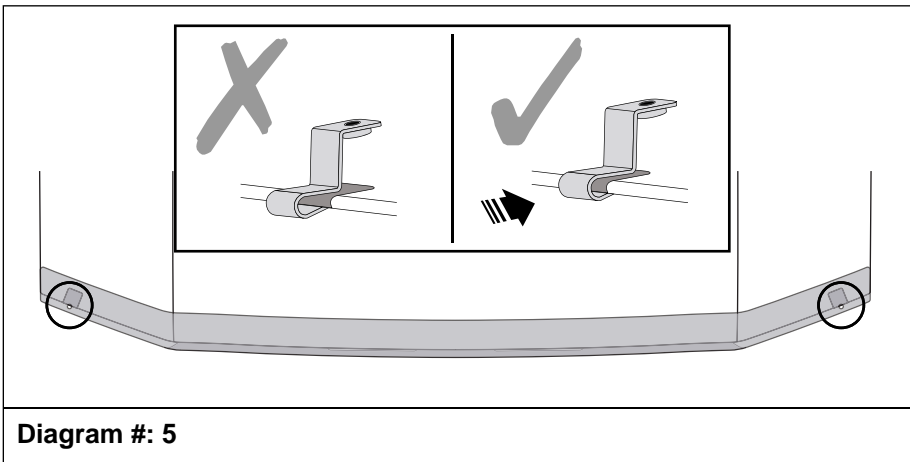
3. Fit the bonnet protector centrally to bonnet. Secure the bonnet protector to the three screw plugs with the self-tapping screws and fibre washers provided.
See Dia #3

Note: Ensure torque setting 1.5~2.0NM is used.



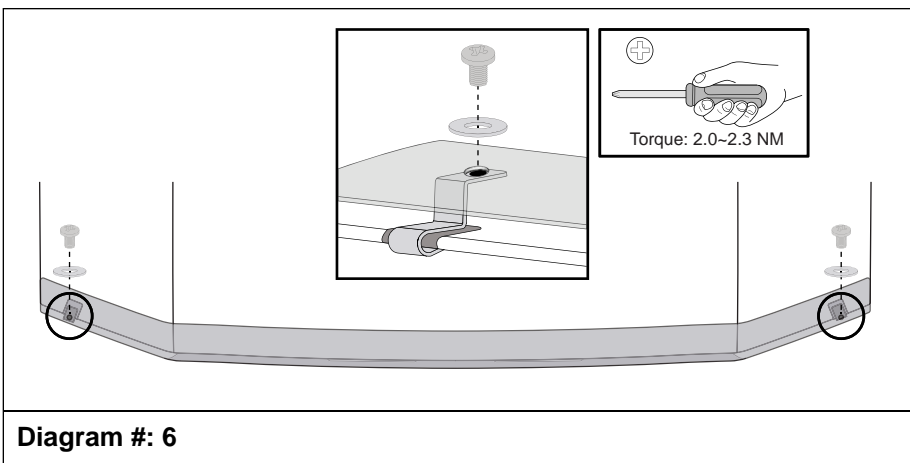
4. At the outer hole locations, clean bonnet with an alcohol wipe and wipe off any residue with a dry clean cloth.

Adhere the anti-abrasive tape strips directly below the holes in the Bonnet Protector. Apply tape so approximately half of the tape is on the topside and half is on the underside of the bonnet.
See Dia #4.



5. Slide the push-on metal clips onto the bonnet locating them over the anti-abrasive tape strips as shown.
See Dia #5.

IMPORTANT: Ensure that the clips are positioned over anti-abrasive tape and does not come into contact with any of the bonnet's paint work. Failure to do so may result in permanent paint damage.



6. Secure the Bonnet Protector to the two push-on metal clips with the small screws and fibre washers.

Check the Bonnet Protector is sitting centrally on the bonnet. Tighten all both screws.
See Dia #6.

Note: Ensure torque setting 2.0~2.3NM is used.

TO REMOVE: Reverse the above procedure.

IMPORTANT: Conduct final inspection, ensuring all fasteners are tightened, and clips are correctly installed and not touching painted surfaces. Close bonnet and check clearances at all edges for interference and adjust if necessary.