



NUDGE BAR WITH 125KG COMPLIANCE H-RACK SUITABLE FOR TOYOTA HILUX 2020-2023

SKU: 36432-36434-36439_20on



Installation Guide

Please note:

Please read these instructions carefully prior to installation. Check the contents of this kit before commencing fitment and report any discrepancies. Do not use power tools. Only tighten with hand tools to avoid stripping the bolt heads or cross threading the bolts. It is the installer's responsibility to ensure all connections are water tight. Prior to commencing the installation it is the installers responsibility to verify that all components, particularly the template are correct. Problems and losses which occur due to improper installation and use are not covered by our warranty.

Step 1:

- Start by removing the clips that hold the middle plastic dust cover that sits between the bash plate and front bumper. (See figure 1)



Figure 1: Plastic dust cover with clips removed.

Step 2:

- Remove the plastic dust tray. Do not discard the dust tray.



Figure 2: Removed plastic dust cover.



Step 3:

→ Pop out the plastic deflectors (left and right side) and discard. *(See figure 3 & 4)*



Figure 3: Installer removing the plastic deflector.



Figure 4: All parts that require to be removed from the vehicle to continue installation.

Step 4:

- Bolt on the left and right brackets to the chassis. Make sure the fold on both brackets are facing outward. (See figure 5 & 6)
- Use the shorter bolts with fine thread, regular flat washer and spring washer to bolt into the captive nut in the chassis on each side.

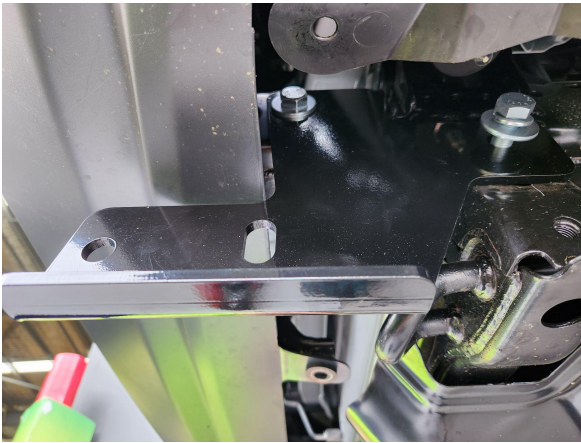


Figure 5: RHS bracket.

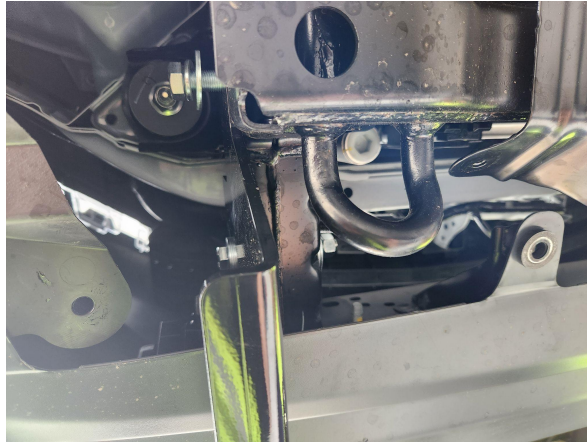


Figure 6: LHS bracket.

Step 5:

- Use the longer bolt, spacer, two washers, spring washer and nut on each side to bolt all the way through the chassis. (See figure 8)
- Slide the spacer on once the bolt is inside the chassis. (See figure 7)
- Place the large washers on the inner side of the chassis for added strength. (See figure 9)

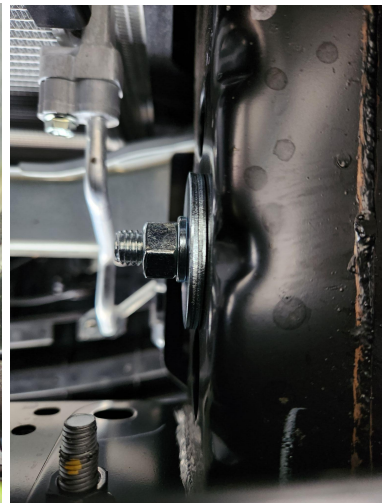


Figure 7: Spacer inside chassis. Figure 8: Bolted through chassis. Figure 9: Two washers.



Step 6:

- Bolt on the nudge bar to the previously mounted brackets. *(See figure 10)*



Figure 10: Nudge bar bolted to brackets.

Step 7:

- Cut the plastic dust tray to allow the steel brackets to protrude through.
- Place the plastic dust tray back into its original position. *(See figure 11)*



Figure 11: Plastic dust tray re-installed on the vehicle.