

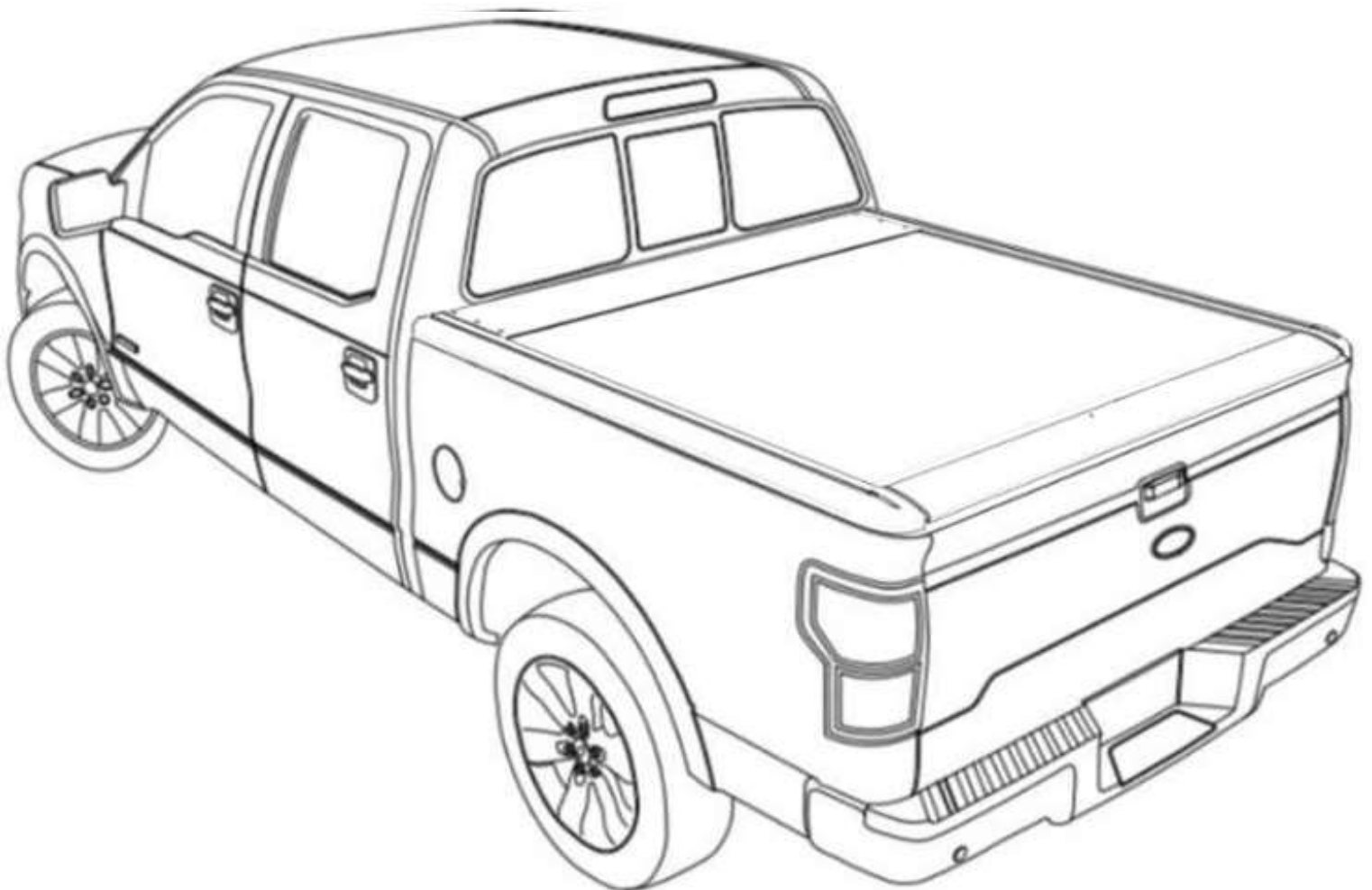
User's Manual of Electric Retractable Tonneau Cover



Please scan wechat QR code

Initial password: 123456

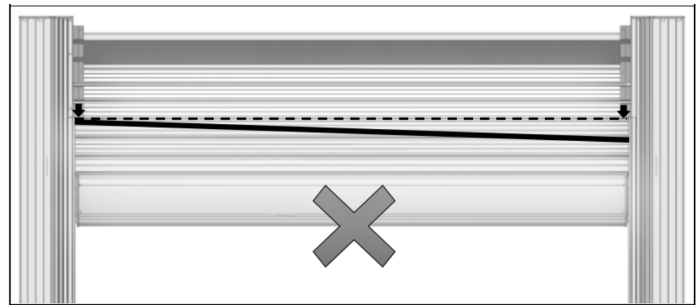
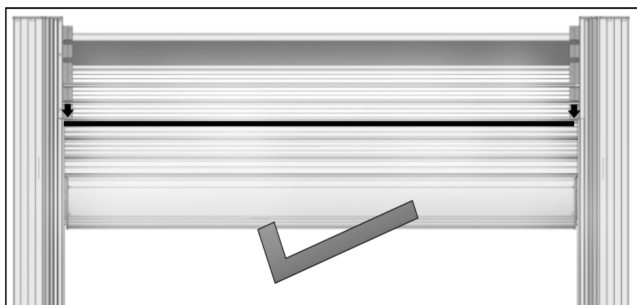
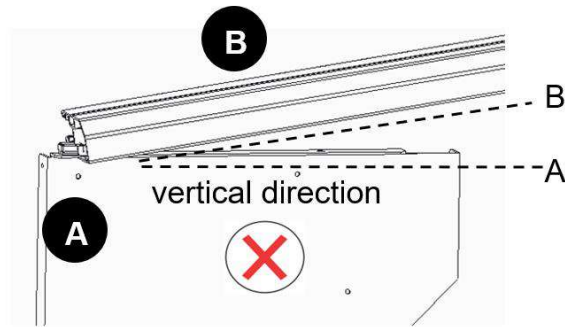
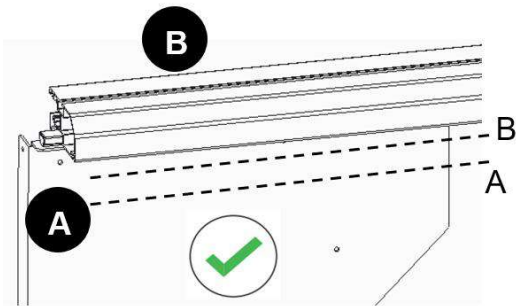
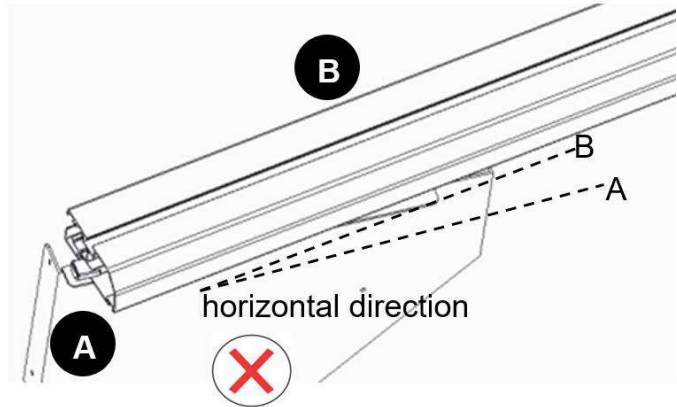
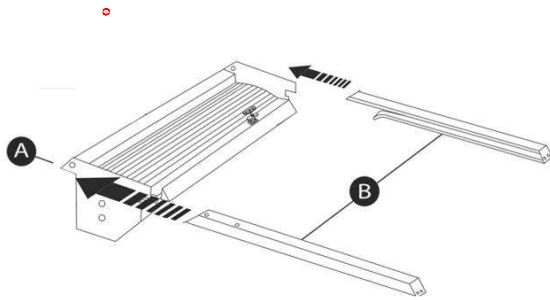
Please change the password after login!



Accessories List :

		
<p>A1-Canister</p>	<p>A2-Track</p>	<p>A3- Top Cover</p>
		
<p>A4- Positioning Aluminum Bar</p>	<p>A5-Drain Tube</p>	<p>A6- Foaming Adhesive Tape</p>
		
<p>A7- Bolt MBX40 Bolt MBX50 Screw washer</p>	<p>A8- Rubber Cover of Track Front End</p>	<p>A9- Rubber Washer of Drain Tube</p>
		
<p>A10- Hose Clamps</p>	<p>A11- Clamp Bracket</p>	<p>A12- Lubricant (for rust-proof and noise-reducing)</p>
		
<p>B1-Track Mounting Kit M6*12 screw S=5 Allen Wrench</p>	<p>B2-Top Cover Mounting Kit Hex Flat Screw 5*6 M5 Rubber Washer M5 Rubber Screw Cap S=3 Allen Wrench</p>	<p>B3-T-shape bolt M6*20 M6 hexagon nut with flange</p>
		
<p>Remote Controller</p>	<p>Power cable</p>	<p>Nylon cable ties</p>

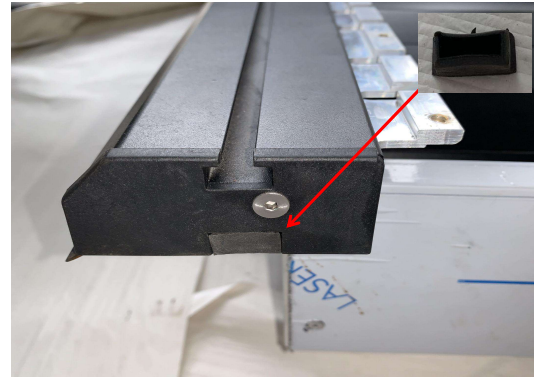
Accessories List :



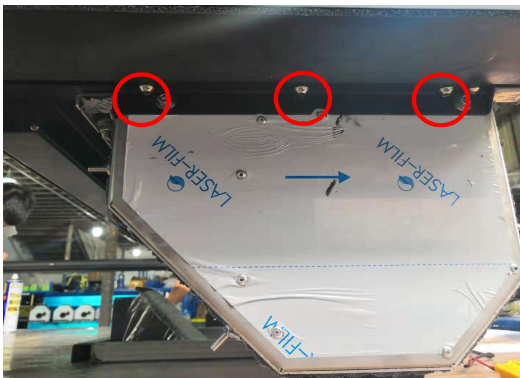
Installation Steps:



Check if the side bars and the front middle bar are horizontal before installing



Install the A8 Rubber Cover of Track Front End here



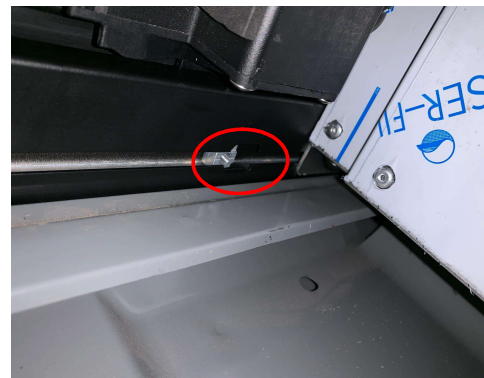
Using B1-Track Mounting Kit to install A2 Track on A1 casing, and fasten the screws.



Using B2-Top Cover Mounting Kit to install A3 Top Cover and apply waterproof glue on both sides. The length of waterproof glue shall be no less than 140mm



Placed the assembled parts in the bed (this will require 2 people)



Using B3- Clamp Bracket Mounting Kit to install the Track. Insert the sliding nut M6 into the track and install with M6*25 screw

Installation Steps:



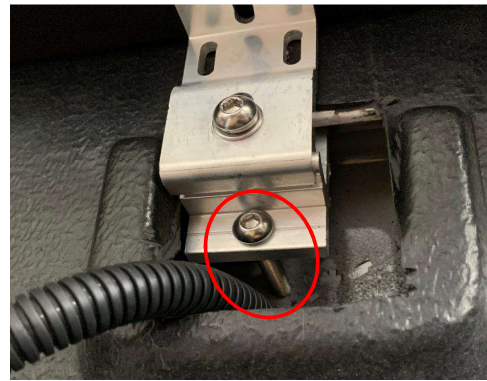
Place the assembled sliding nut kit on the track and slide to proper place



Adjust the Track to the center position with aluminum bar



After positioning well, then use M6 Flat Washer and M6 nut to fasten it.



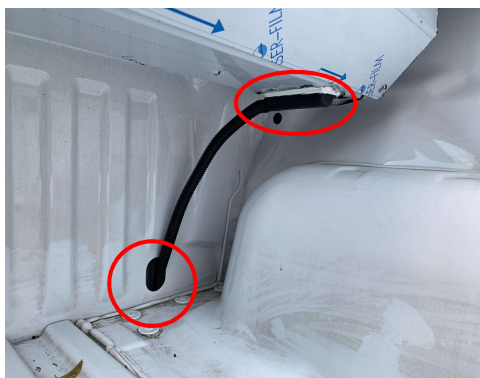
Adjust the horizontal level through this screw and bracket



Adjust the horizontal level through this screw and bracket



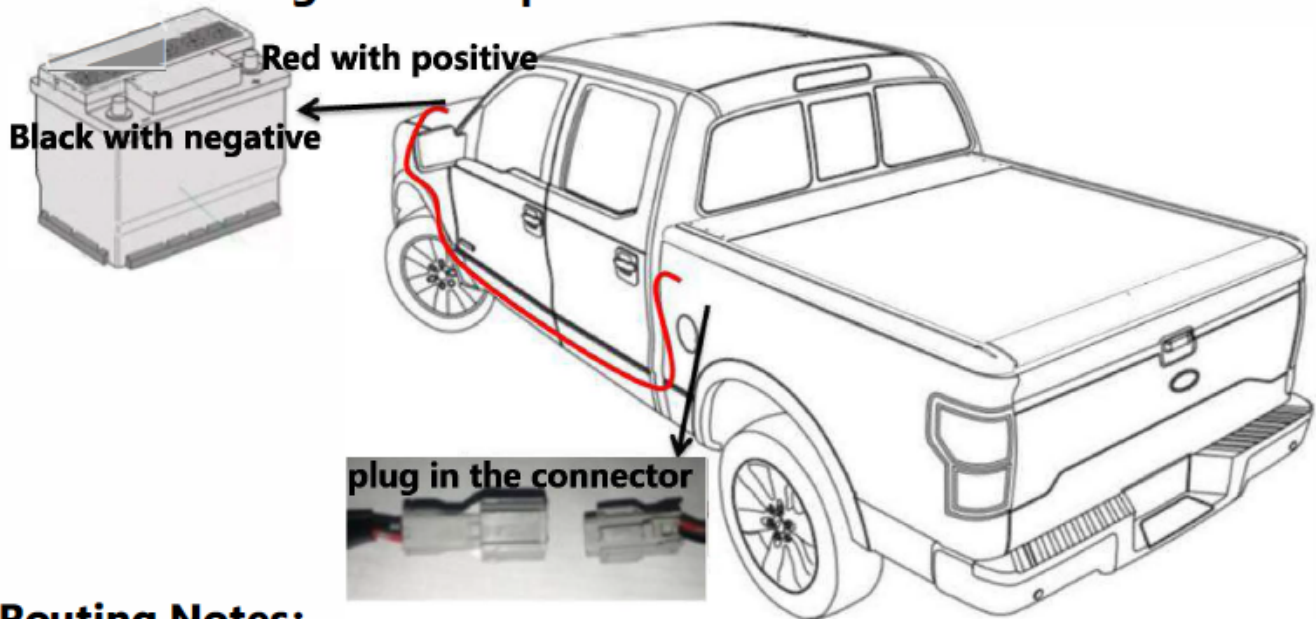
Install one end of the drain tube on the Track with Hose Clamps, and route the other end of the drain tubes out from the holes.



Install one end of the drain tube on the Track with Hose Clamps, and route the other end of the drain tubes out from the holes.

Controller Installation Instruction

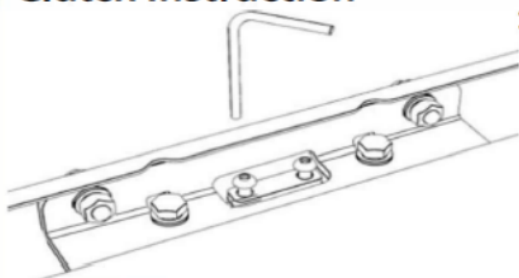
The wiring route of power cable is as below in red color



Routing Notes:

1. Recommend wiring routing sequence: engine compartment → wheel trims → truck bed
2. Most vehicles already have holes on truck bed, please route the cables through the existing holes in to the truck bed. For vehicles without the holes, suggest drilling a $\varnothing 20\text{mm}$ diameter hole.
3. Please make sure to avoid engine housing, exhaust pipe and other hot parts while wiring routing.

Clutch Instruction



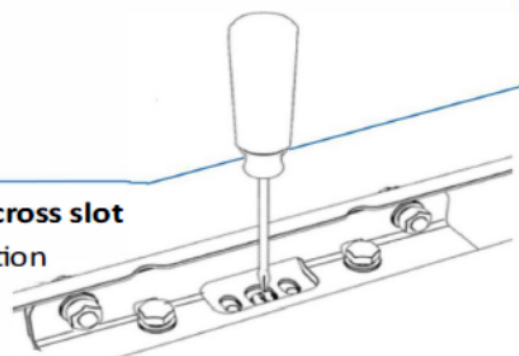
1. Dismantle the 2pcs screws and fixing plate in following picture with S=5 hex wrench.

2. Use a screwdriver to rotate the middle cross slot

- 2.1. Rotate counterclockwise until the rotation

axis is in parallel with the black bracket, then the gear device shall be separated,

thus switching to manual mode to manually open/close the Tonneau Cover.



- 2.2. Rotate back clockwise until the rotation axis can't turn, then use remote controller to close the Tonneau Cover. During closing process, rotate clockwise again until the rotation axis is in parallel with the black bracket, then install back the fixing plate. Thus switching to normal electric mode.

Remote Controller Function Instruction



Indicator light of remote controller

A:Close Tonneau Cover

B:Open Tonneau Cover





C:Turn off LED Light

D:Turn on LED Light

1.Indicator light of remote controller: When any one of the buttons is pressed, the signal indicator lights up.

2.Protection Cover: Please push the protection cover up when not using in case of any mis-operation.

Instruction of buttons:

Buttons	Name	Description
	Turn on LED Light	Press the button to turn off the LED Light.
	Turn on LED Light	1. Press the button to turn on the LED Light if the light is off, and brightness restored to its previous brightness. 2. Press the button to switch to the next level brightness if the light is on(3 level brightness cycle switch)
	Close Tonneau Cover	1.Press the button to start closing the Tonneau Cover if it is in static mode. 2.Press the button to stop the Tonneau Cover if it is in operating mode.
	Open Tonneau Cover	1.Press the button to start opening the Tonneau Cover if it is in static mode. 2.Press the button to stop the Tonneau Cover if it is in operating mode.



**Effect after
installation**

Helpful Maintenance Hints

- 1.To assure quiet, smooth operation of your cover regularly clean and then lubricate the rail tracks and canister. How often will depend on the environment and the type of lubricant used. We recommend using the one we supplied or other lubricants you prefer can also be used. Avoid using petroleum-based product on rubber seals. Lighter oil spray lubes with PTFE (Teflon) seem to work the best when regularly wiped out and reapplied.**
- 2.Use a dry lube when the maintenance intervals will be longer. They don' t lubricate as well but seem to have a little better staying power and they don' t attract dust.**
- 3.Avoid the thicker grease type because they tend to get sticky and gather a lot of dust and debris and then later dry out. Also Avoid the silicone dry lubes as they tend to cause squealing noise between the sliding components.**
- 4.To clean and lubricate the rail tracks, liberally apply the lubricant to a rag and wipe it inside of the rail tracks, along the underside of the sweep seal and the top of the wear strip. Repeat until the dust and crime has been removed and the components are lubricated.**
- 5.To clean the canister, remove the rail stops, or vertical rails as required, and run the cover out far enough that you can get into the canister. Liberally apply the lubricant to a rag and wipe the inside of the canister. When clean lubricate the components in the canister. While in the canister ensure the Drain Tubes are clear of any debris or blockage. Reassembly the cover.**
- 6.To help keep the cover looking its best, we recommend washing it the same as caring for your truck finish.**
- 7.If the indicator light of remote controller is obviously weak or does not light when pressing the button, please replace the battery in time. (Battery model: 23A/12V).**