



INSTALLATION GUIDE FOR SNORKEL SUITABLE FOR: FORD RANGER PX 2012-2015 FORD RANGER PX2 & PX3 2015-2022

SKU: 72663 & 247623

Please Note:

Please read these instructions carefully prior to installation. Check the contents of this kit before commencing fitment and report any discrepancies. Only tighten with hand tools to avoid stripping the bolt heads or cross threading the bolts. Prior to commencing the installation it is the installers responsibility to verify that all components are correct. Problems and losses which occur to improper installation and use are not covered by our warranty. We HIGHLY recommend professional installation.

PARTS LIST:

Ford Ranger PX 2012-2015 (SKU: 72663)



Ford Ranger PX2 / PX3 2015-2022 (SKU: 247623)



TOOLS REQUIRED (not supplied):



Power Drill &
Step Drill



Spanner (13mm)



Pop Rivet Gun

1. Before installation check snorkel application is compatible with your vehicle. These instructions are for the PX, PX2 and PX3 only.

Refer to headings throughout these instructions for directions specific to your vehicle.

PX2 & PX3

- 2A. Remove right hand front mud guard liner, mud flap, air box, air entry duct to air box, mud guard stuffer, front mud guard grill and side marker indicator.



- 3A. Apply masking tape around opening on mud guard and to screen pillar.

Go to Step 5A&B.



PX1

- 2B. Remove right hand front mud guard liner, mud flap, air box, air entry duct to air box, mud guard stuffer, front mud guard grill and side marker indicator.



- 3B. Apply masking tape to right hand windscreen pillar.

- 4B. Attach snorkel securing bracket from inside of mud guard using pop rivets supplied as shown.



PX2 & PX3

- 5A&B. Stick snorkel gasket to back of snorkel body as shown, using lock tight screw studs into captive nuts on back of snorkel body.

Note: Long 40mm stud goes in hole as shown.



- 6A&B. Attach upper mounting bracket loosely to snorkel.



- 7A&B. Hold snorkel body in position on mud guard. Mark location of top mounting bracket onto screen pillar.

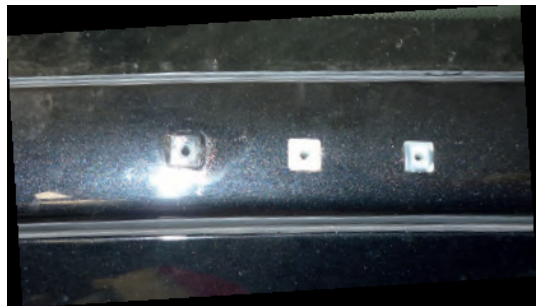
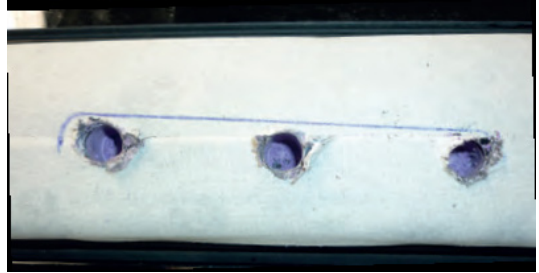
Note: Make sure that snorkel mounting bracket clears the driver's side door.



- 8A&B. Remove mounting bracket from snorkel. Hold bracket in position previously marked on pillar and mark three mounting holes.

Drill mounting holes in pillar to 7.5mm. Apply silicone sealant. Insert mounting plugs and attach mounting bracket using three self tapping screws provided.

Note: When drilling holes, drill far enough to pillar insulation to allow plugs to be inserted.



PX2 & PX3

9A.

Install snorkel body to mud guard. Place snorkel mounting plate over studs and secure in position with nyloc nuts and body washers provided. Attach to pillar using M6 bolts and washers provided.



PX1

9B.

Install snorkel body to vehicle using three nyloc nuts and body washers provided and attach to pillar bracket using M6 bolts and washers provided.



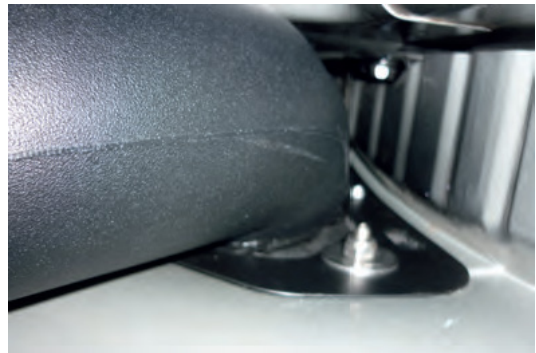
PX2 & PX3

10A&B.

Drill hole in mounting flange for rear air duct to 8.5mm. Hole is marked by a dimple.

Apply a liberal amount of silicone to snorkel body and rear air duct. Engage mounting flange for rear air duct to long stud on snorkel and secure using M8 nyloc nut and washer provided.

Note: Make sure that connection is properly sealed.



11A&B.

Attach duct bracket to captive nut in duct. Mark hole location on inner guard and drill to 8.5mm, then attach using M8 bolt, nut and washers provided.



12A&B.

Apply a liberal amount of silicone to both internal and external mating surfaces of front and rear ducts and push together as shown. Make sure that connection is sealed.



13A&B.

Attach front duct mounting bracket as shown and secure using hardware provided.

Note: Factory bracket may need to be bent up to allow clearance for front air duct as shown in red circle.



14A&B.

Remove factory adaptor from air box as shown.



15A&B.

Fit supplied air box adaptor to air box. Seal both inner and outer mating surfaces with a liberal amount of silicone. Secure in place using self tapping screws provided.



16A&B.

Apply a liberal amount of silicone to air box adaptor and air entry duct. Refit air box to vehicle.

Note: Ensure connection is properly sealed.



17A&B.

Pull wiring for side marker indicator through snorkel body and attach indicator to snorkel.

18A&B.

Check all hose connections and air box for potential leaks and seals as required.

19A&B.

Re-fit guard liner and mud flap.

20A&B.

Fit Bossco4x4 air ram and secure with hose/ clamp provided.

