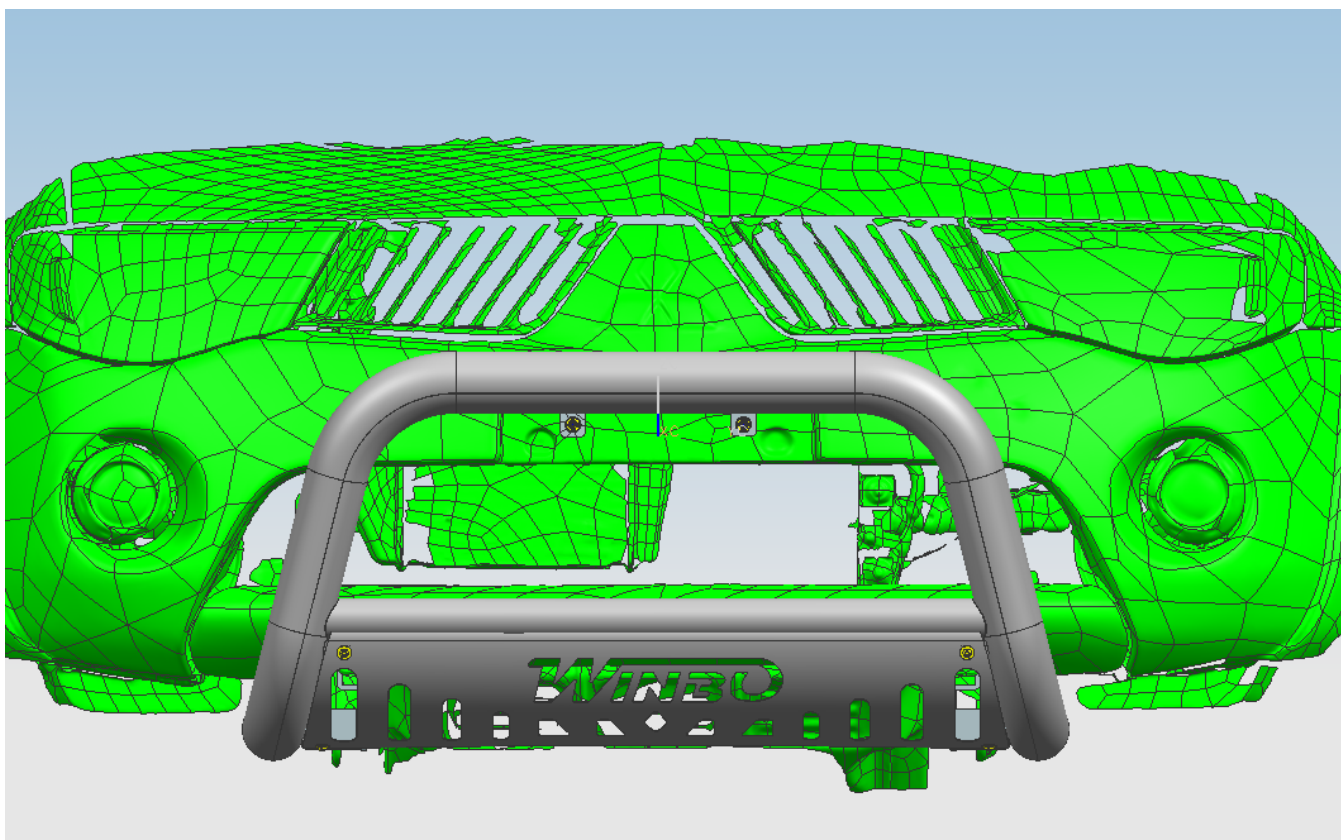


INSTALLATION INSTRUCTIONS

Low 3" Inch Nudge Bar suitable for Mitsubishi Challenger PC/PB 2010-2015

Before Installation

- Please read the instructions completely and carefully
- The figures here are for reference only and may have differences with the actual product you receive, however they share the same method of assembly.



Care and Cleaning

- Mild soap may be used to clean the product.
- Please periodically check and retighten all hardware to ensure maximum life and durability.

Parts list

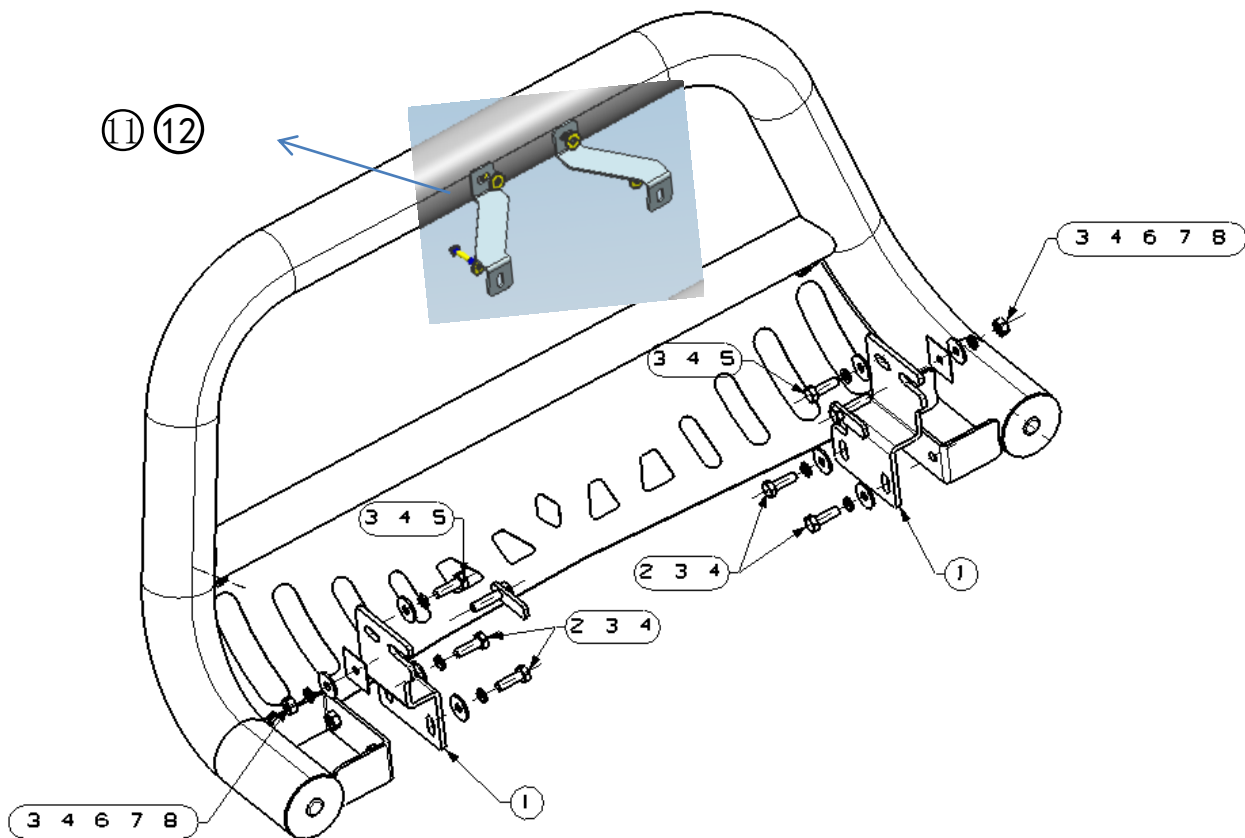
INSTALLATION INSTRUCTIONS

NO.	QTY	PIC	NO.	QTY	PIC
①	2	A blue L-shaped metal bracket with two mounting holes on the vertical flange and one on the horizontal flange.	②	4	A black hexagonal bolt with a hexagonal head.
		Mount bracket (L&R)			Hex bolt M10-30
③	8	A grey circular washer with a central hole.	④	8	A grey lock washer with a split design.
		Large washer D10(10x30x2.5mm)			Lock washer D10
⑤	2	A black hexagonal bolt with a hexagonal head.	⑥	2	A grey T-bolt with a hexagonal head and a T-shaped base.
		Hex bolt M10-30 (fin thread)			T-bolt M10
⑦	2	A grey square plastic plate with a central hole.	⑧	2	A grey hexagonal nut.
		Plastics plate D10			Hex nut M10
⑨	1	A blue L-shaped metal bracket with two mounting holes on the vertical flange and one on the horizontal flange.	⑩	1	A blue L-shaped metal bracket with two mounting holes on the vertical flange and one on the horizontal flange.
		Left Connecting Bracket			Right Connecting Bracket
⑪	2	A yellow hexagonal bolt with a hexagonal head.	⑫	4	A yellow circular flat washer with a central hole.
		Hex bolt M6_25			Flat washer D6

Installation Steps

INSTALLATION INSTRUCTIONS

Installation diagram



Install the grille guard and brackets to the vehicle following the installing diagram above.

NOTE

Any damage and loss caused by improper installation or use are not included in the scope of our quality warranty.