

INSTALLATION INSTRUCTIONS



FITTING KIT PART#
298184

NUDGE BAR BRACKET FOR MAZDA BT50 2021 +

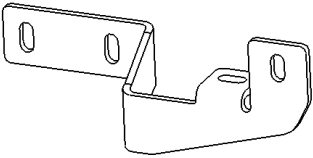
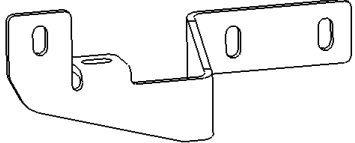
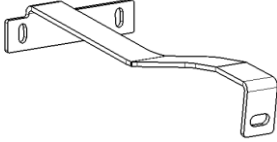

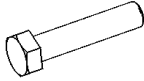
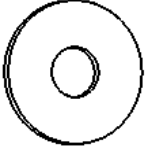

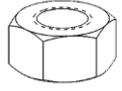
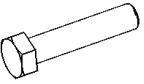
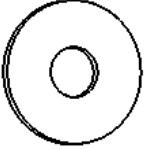
Before Installation

- Please read these instructions carefully prior to installation
- Check the contents of this kit before commencing fitment and report any discrepancies
- Place these instructions in the vehicle's glove box after installation is complete




Care and Cleaning

- Mild soap may be used also to clean the product.
- Please periodically check and retighten all the hardware

Part List

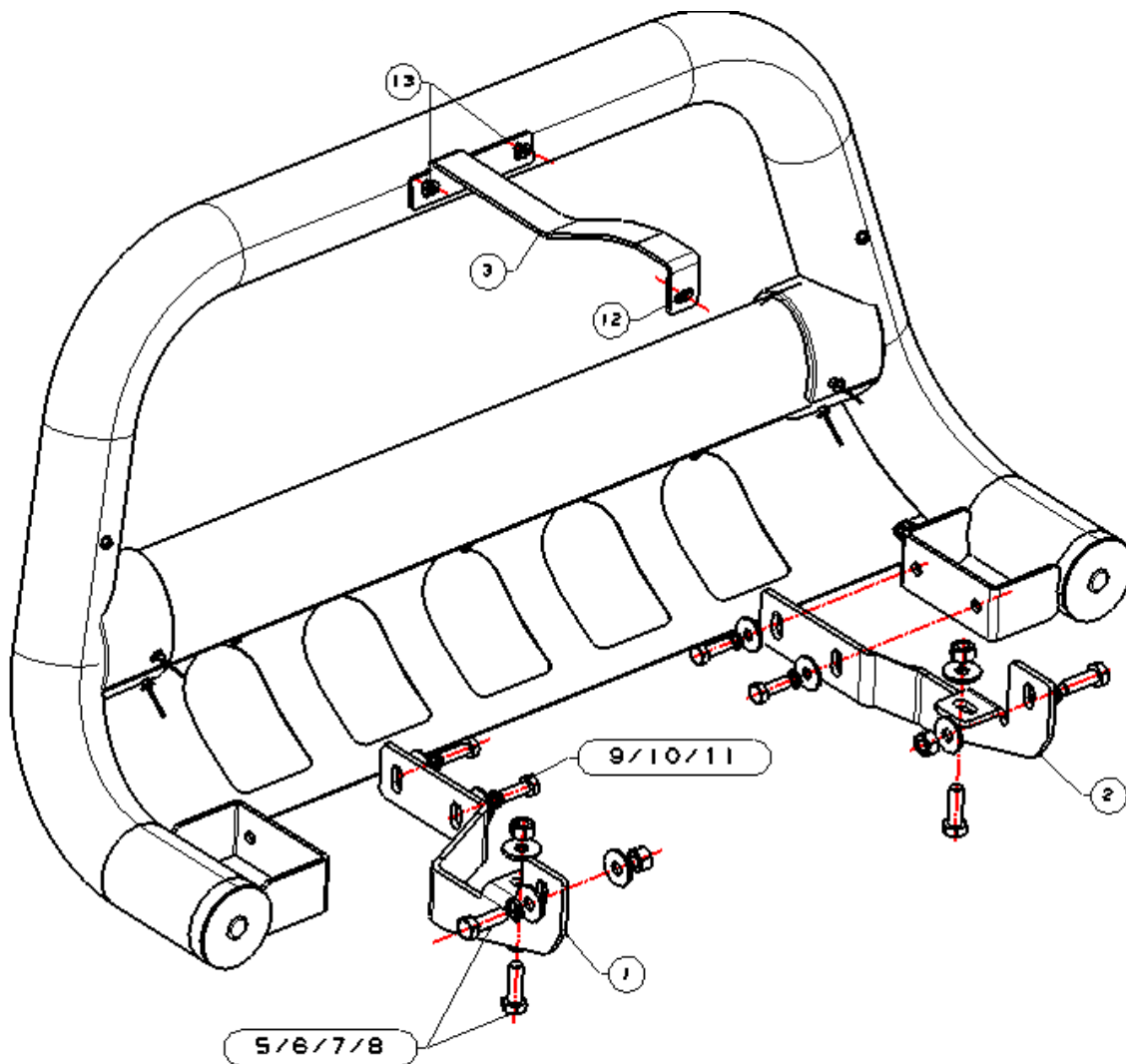
NO.	QTY	PIC	NO.	QTY	PIC
①	1	 bracket(L)	②	1	 bracket(R)
③	1	 mount bracket	④	1	 Allen Wrench S=4
⑤	4	 hex bolt M12_35	⑥	8	 Large Washer D12
⑦	4	 Split lock washer D12	⑧	4	 Hex nut M12
⑨	4	 hex bolt M10_30	⑩	4	 Large Washer D10

INSTALLATION INSTRUCTIONS

⑪	4	 Split lock washer D10	⑫	1	 Large Washer D8
⑬	2	 hexagon screw assembly M6			

Installation Steps

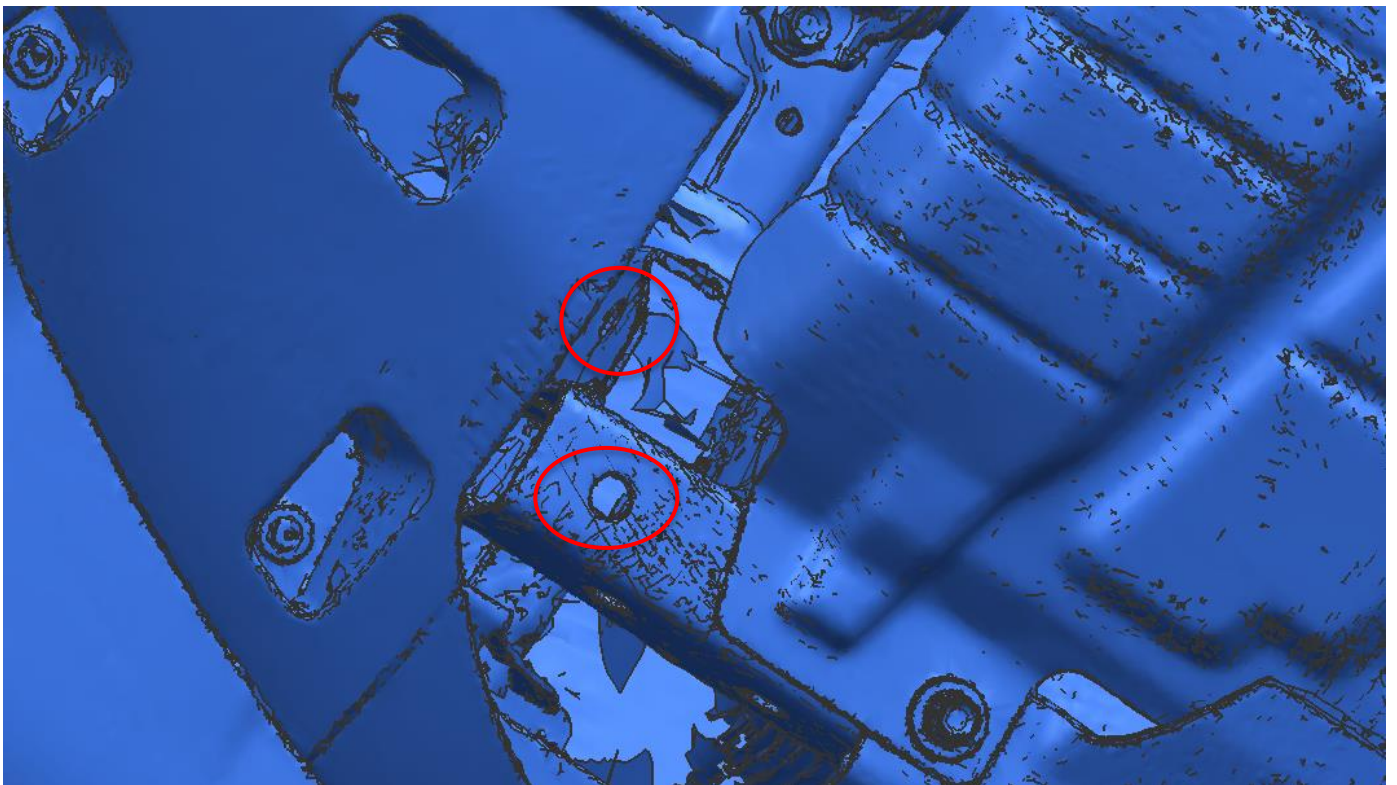
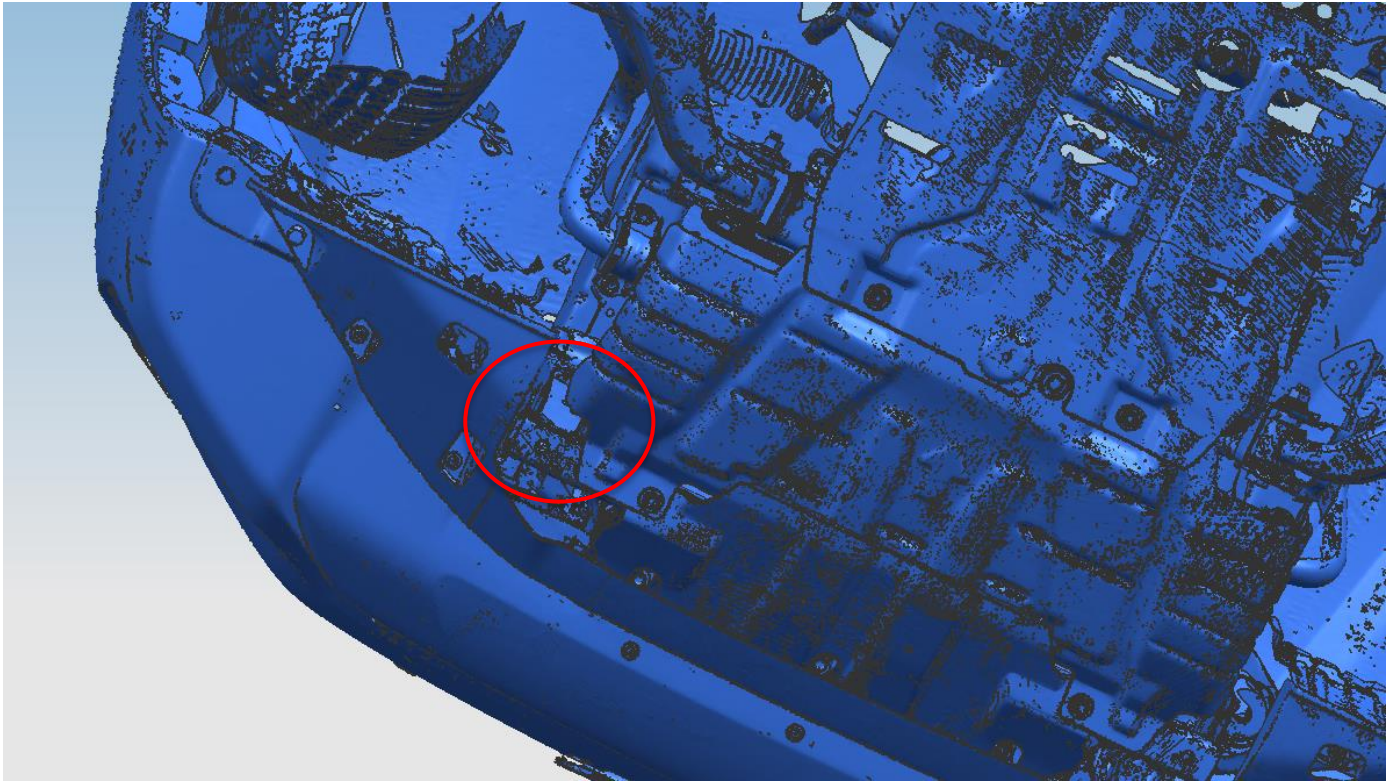
INSTALLING PICTURE:



Step 1:

Install the bracket ①② as following picture shows. (Left and right are symmetrical)

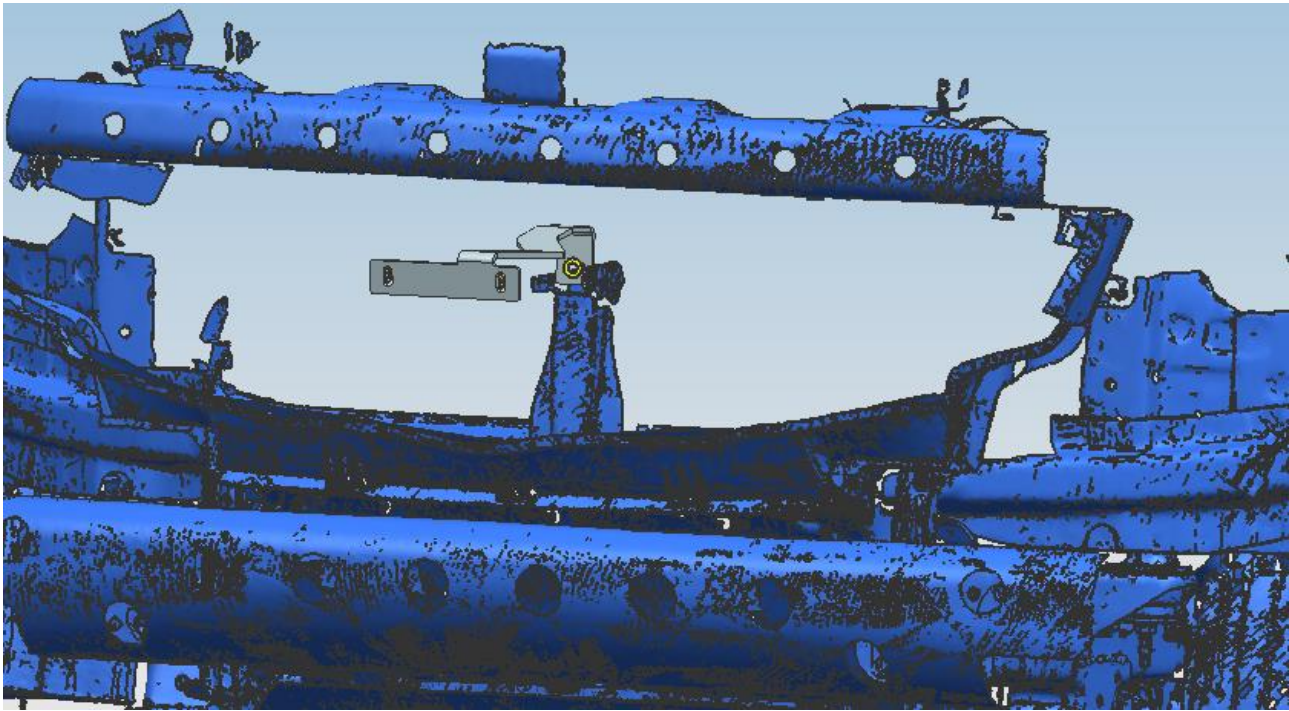
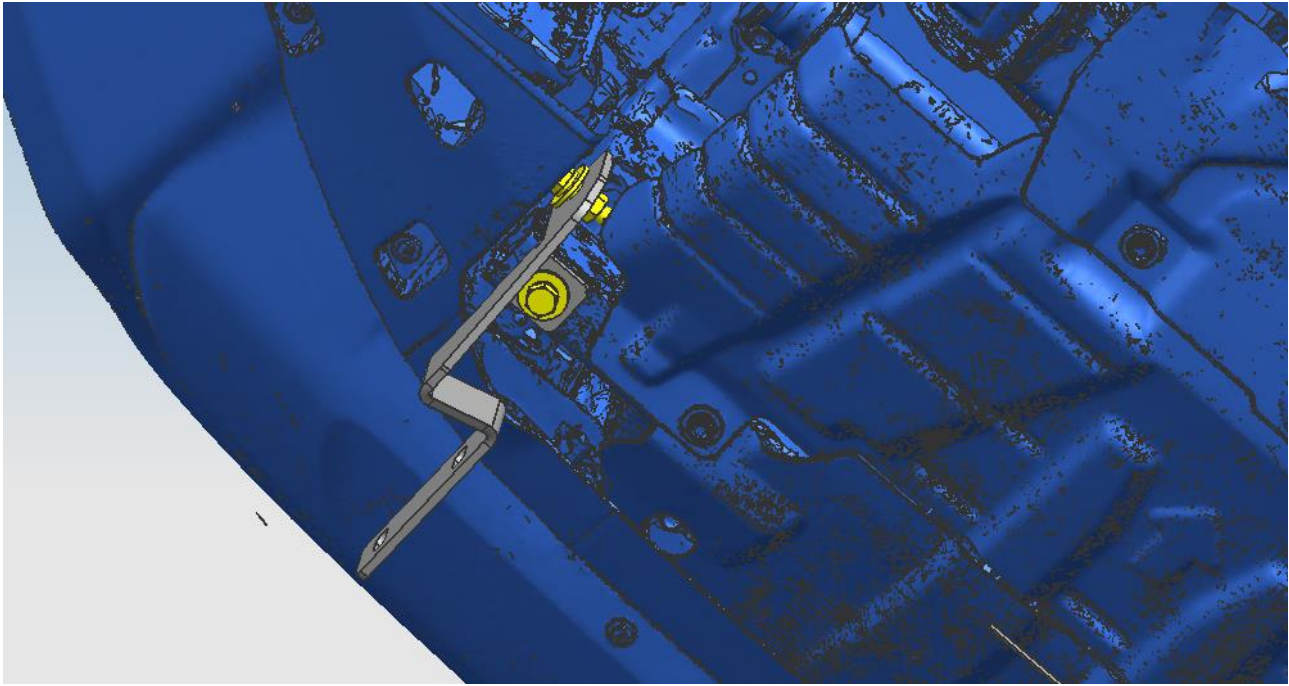
INSTALLATION INSTRUCTIONS



Step 2:

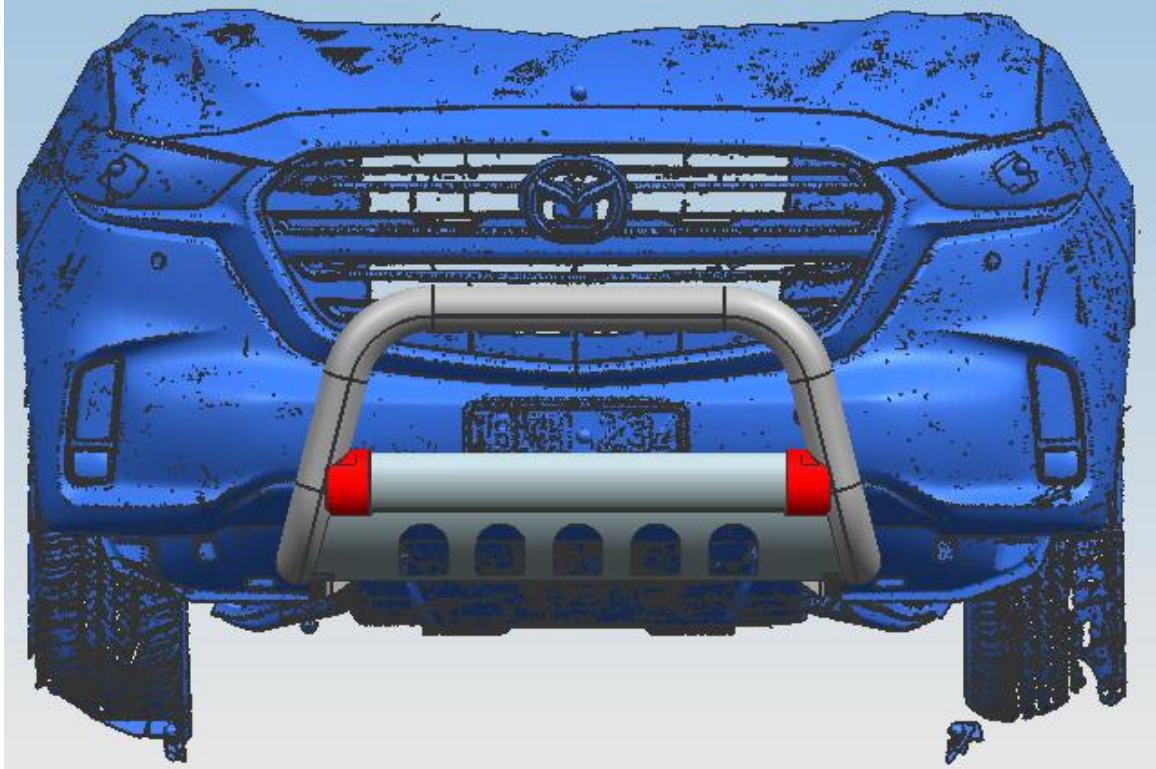
Install the bracket③ as following picture shows.

INSTALLATION INSTRUCTIONS



The final image is shown below:

INSTALLATION INSTRUCTIONS



NOTE

Any damages and losses caused by improper installation and application may void your warranty

BOSSCOTM
4X4 ACCESSORIES