

Installation Manual

Apply for 18+Jeep Wrangler JL, 4 doors ELC Side Step

1. Precautions

1. Please read the Installation Manual carefully beforehand; Pay attention to protect the surface of the vehicle during installation to avoid scratches.
2. Please regularly check whether all accessories connected to the step and the car are well connected to ensure safe use.
3. Please strictly follow the wiring diagram in installation manual.
4. The ECU of the ELC Side Step must be placed inside the vehicle.
5. The white motor wire plug that is opposite to the main wiring harness must be placed inside the car.
6. Please apply provided sealant on places where the wiring harness passing through the threading hole of the chassis for waterproof.
7. When wiring and installing, please make sure to avoid high-heat components such as the engine casing and exhaust pipe.
8. When connecting the signal line, be sure to avoid short circuit of two lines or short circuit with the car body. Be sure to use the clamps provided by the manufacturer.

2. Preparation:



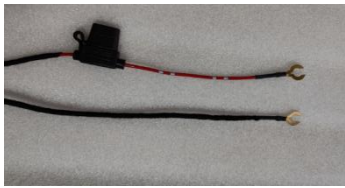


1. Check whether the product to be installed is in good condition and whether the accessories are complete.
2. Prepare the installation tools.

			
Allen wrench	Utility knife	Scissors	Rocker
			
Torx Allen Wrench	Slotted/Phillips screwdriver	socket wrench	open end wrench

3. Bill of material

NO.	Name	QTY	SIZE	NO.	Name	QTY	SIZE
(1)	Pedal	2		(9)	Hex socket head cap bolts	8	M6*20
(2)	Front Bracket	2		(10)	Spring Washer	8	M6
(3)	Rear Bracket	2		(11)	Flat Washer	8	M6
(4)	ECU	1		(12)	electrical tape	1	
(5)	T-Bolts	8	M10*30	(13)	Nylon cable tie	25	
(6)	U-Bolts	2	M10*110*38	(14)	plastic block	8	M10
(7)	Spring Washer	10	M10	(15)	Hex nuts	10	M10
(8)	Extra large washer	10	M10	(16)	Hex bolts	10	M10*25

4.ECU and Cable

	
	ECU
	
	Power cable and fuse
	
	Cable with motor plug
	
Main cable harness	CAN plug-in cable

5.Cable connection



Plug our terminal signal cable directly into the original car socket, and then plug in with the signal cable of the main harness

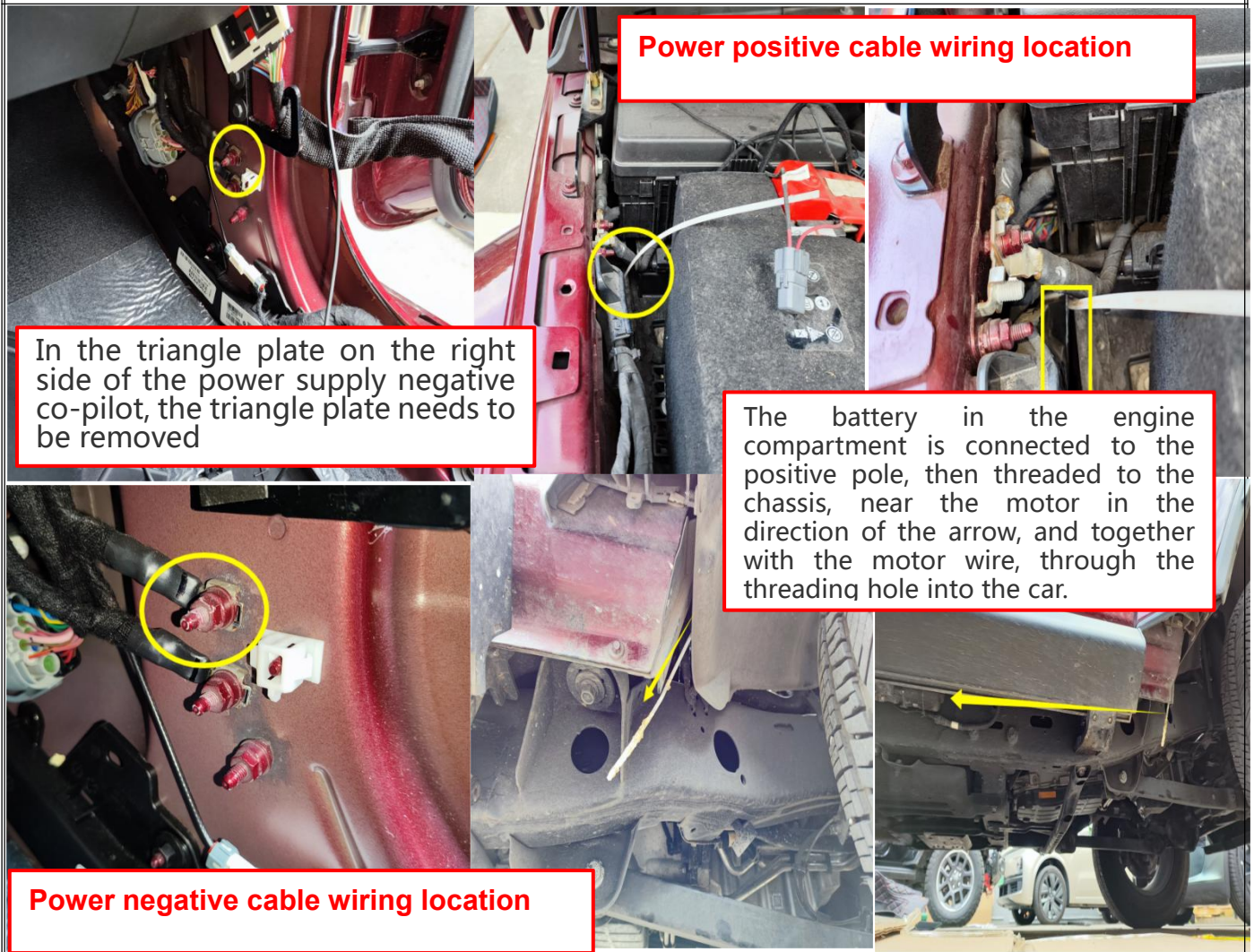
6. 1. Alignment



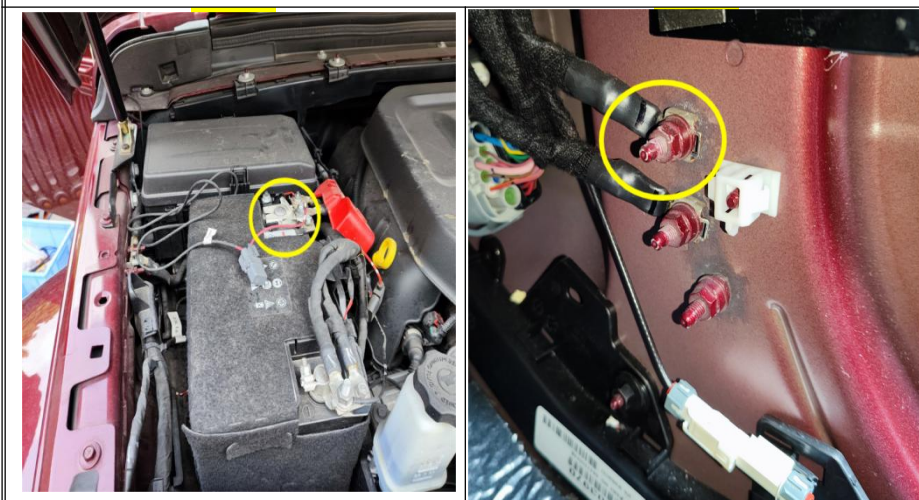
Comprehensive wiring diagram

6.2.Wiring

1. Power cable wiring location



Location of power and grounding wires, placement of ECU



ECU location

1、 Power positive wiring location

2、 Power negative wiring location

3、 ECU location

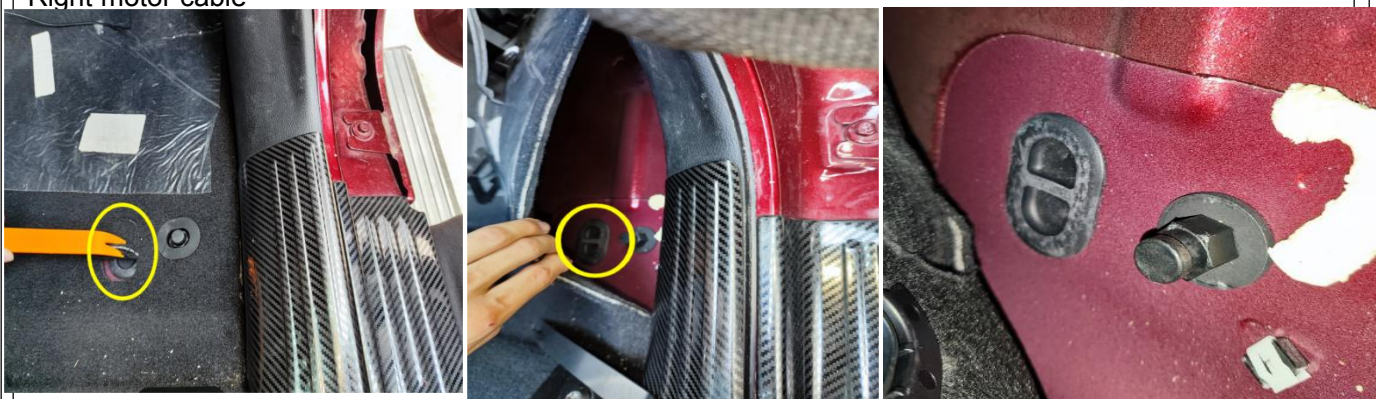
Power cable wiring precautions:

- 1. The periphery of the screw connected to the negative pole of the power cable must be metal, and ensure a good connection with the car body. If it's plastic under the screw, replace the ground point!**
- 2. The controller is not waterproof, it must be placed in the car and fixed with a wire tie to avoid abnormal noise caused by shaking!**

Left motor cable



Right motor cable



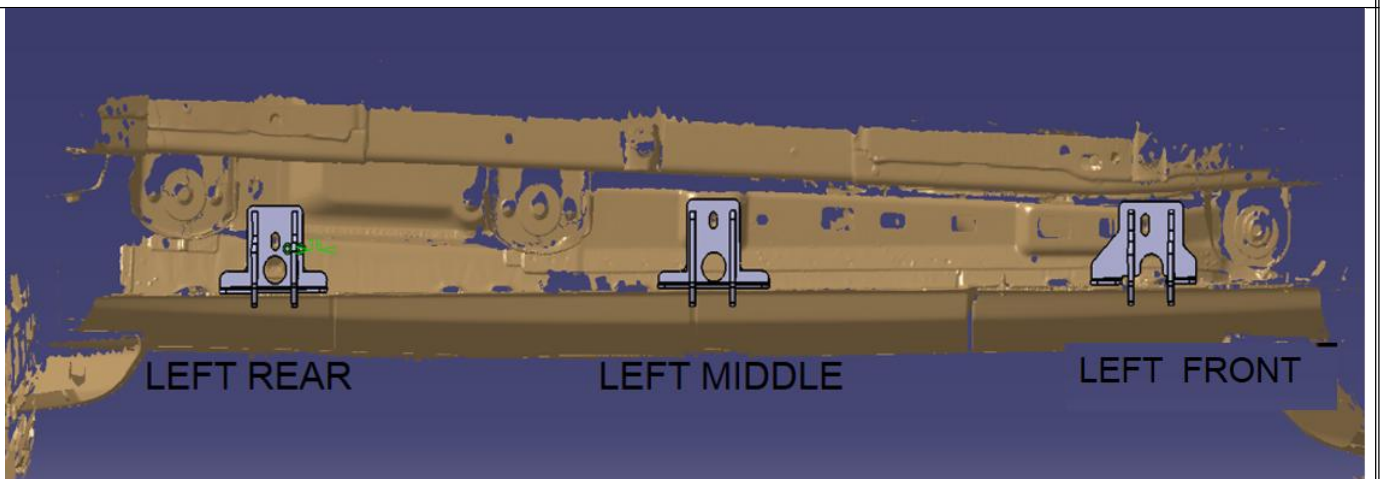
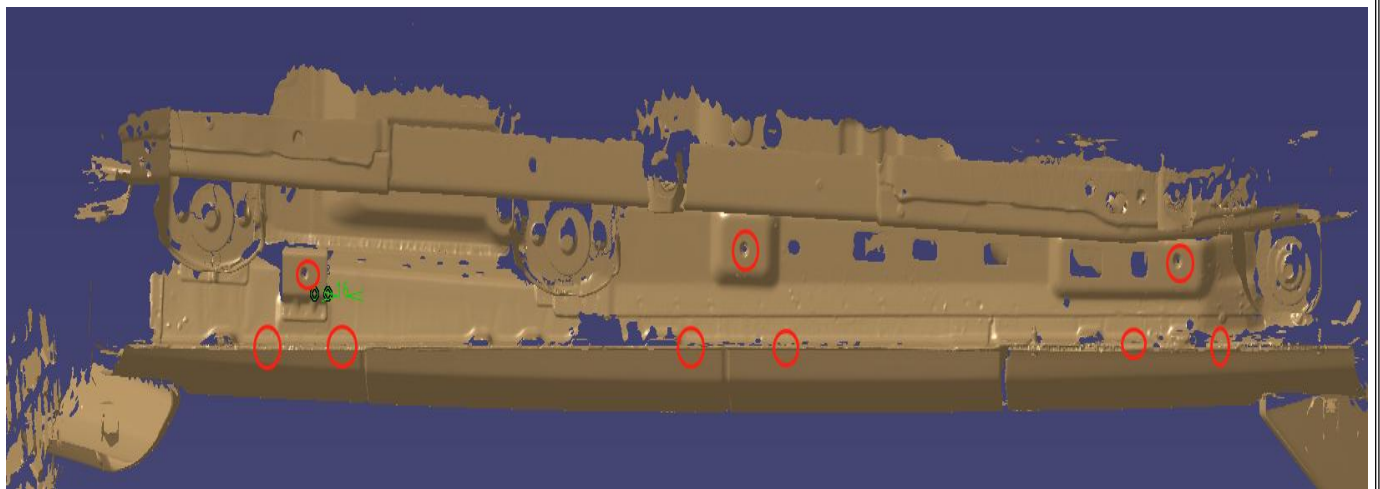
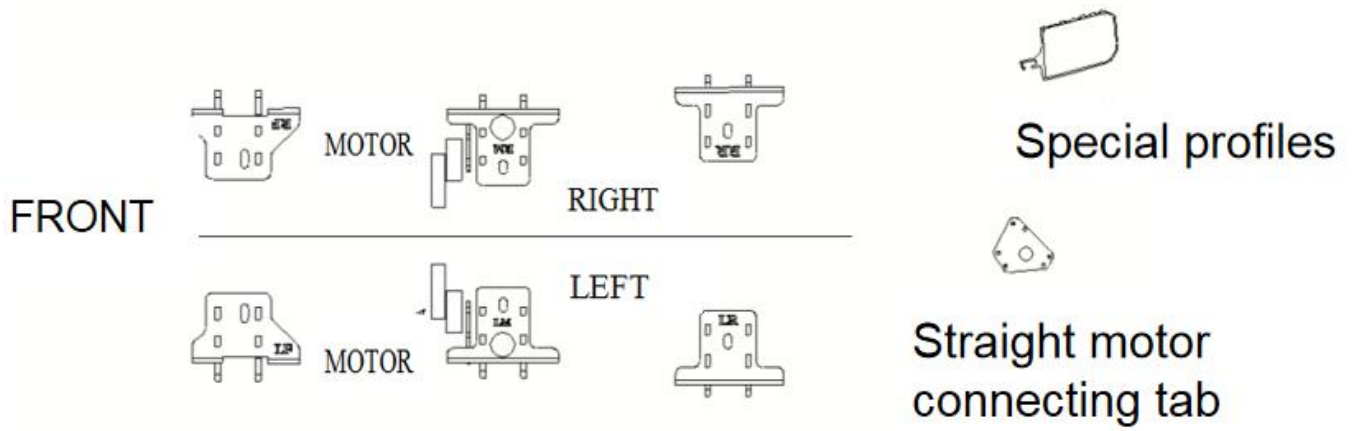
Wiring diagram under the car

Precautions for motor cable wiring:

- 1. The white plug of the motor extension cable and the main wiring harness is not waterproof and must be placed in the car!**
- 2. After the wiring harness passes through the wiring hole of the chassis, the silicone gel provided with the product must be used for waterproofing!**

7、 Side step installation

Corresponding relationship of bracket installation positions: LF: Left front bracket LR: Left rear bracket
RF: Right front bracket RR: Right rear bracket



8、 Installation steps

1. Refer to the accessories list to check whether the accessories are complete. First, test whether the motor is running normally.

2. Distinguish the front, back, left, and right of the bracket, and then put it in the corresponding position together with the fasteners, so as to increase the speed of installation.

3. Insert the plastic cards into the corresponding T-shaped bolts respectively, so as to avoid the failure to complete the loading due to misoperation of inserting the T-shaped screws into the chassis during the loading process.

4. Use cable ties to tidy up the wire group, wrap the exposed wires with electrical tape and fix them, and install the removed guard plate to the original position [(If the guard plate interferes with the bracket when it is restored, it needs to be removed Interference part (the bracket has a chassis protection function, so there is no need to worry about the safety of the body)].

5. The installation is basically completed, check whether there are any omissions in the above installation steps.

9、 disclaimer

It must be installed in accordance with this manual, and related problems and losses caused by improper installation and use are not within the scope of our company's warranty.