

User's Manual

Product Name: Electric Pedal Bracket For 2023+ Ford Ranger

1. Precautions

- 1.1 Please read the User's Manual carefully before installation. Pay attention to the outside appearance during operation in case of any scratch;
- 1.2 Please check regularly if all the connecting components are fixed tightly to ensure safety in use.
- 1.3 About the cable connection, Please follow the installation instructions strictly.
- 1.4 The ECU can't be flushed and soaked, Please note the location of the installation.
- 1.5 The ECU and cable must avoid engine casing, exhaust pipe and other high-temperature components.
- 1.6 It must avoid short circuit of 2 signal cables or with the vehicle body.
- 1.7 Tighten the connector of the motor for better waterproofing.

2. Preparation work

- 2.1 Check whether the product is in good condition and whether the accessories are complete.
- 2.2 Get the installation tools ready.

			
internal hexagonal wrench	knife	scissor	warped board
			
Double hexagonal socket wrench	slot type/cross screwdriver	socket spanner	open spanner

3. Accessories

No.	Name	Qty	Size	No.	Name	Qty	Size
1	Pedal	2		8	Plastic piece	8	
2	Front Bracket	2		9	U-shape bolt	8	50*14*10 M10*30
3	Rear Bracket	2		10	U-shape bolt	2	50*14*10 M10*35
4	ECU	1		11	U-shape bolt	2	70*18*25 M10*35
5	hexagon socket head cap screw	8	M6*20	12	hexagon nuts with flange	12	M10 nut
6	electrical adhesive tape	1		13	U shape washer	10	
7	Nylon cable ties	25		14			

4. ECU & Cable



Main cable



ECU



**positive pole
negative pole**



motor connter



OBD connter

5. Cable connection

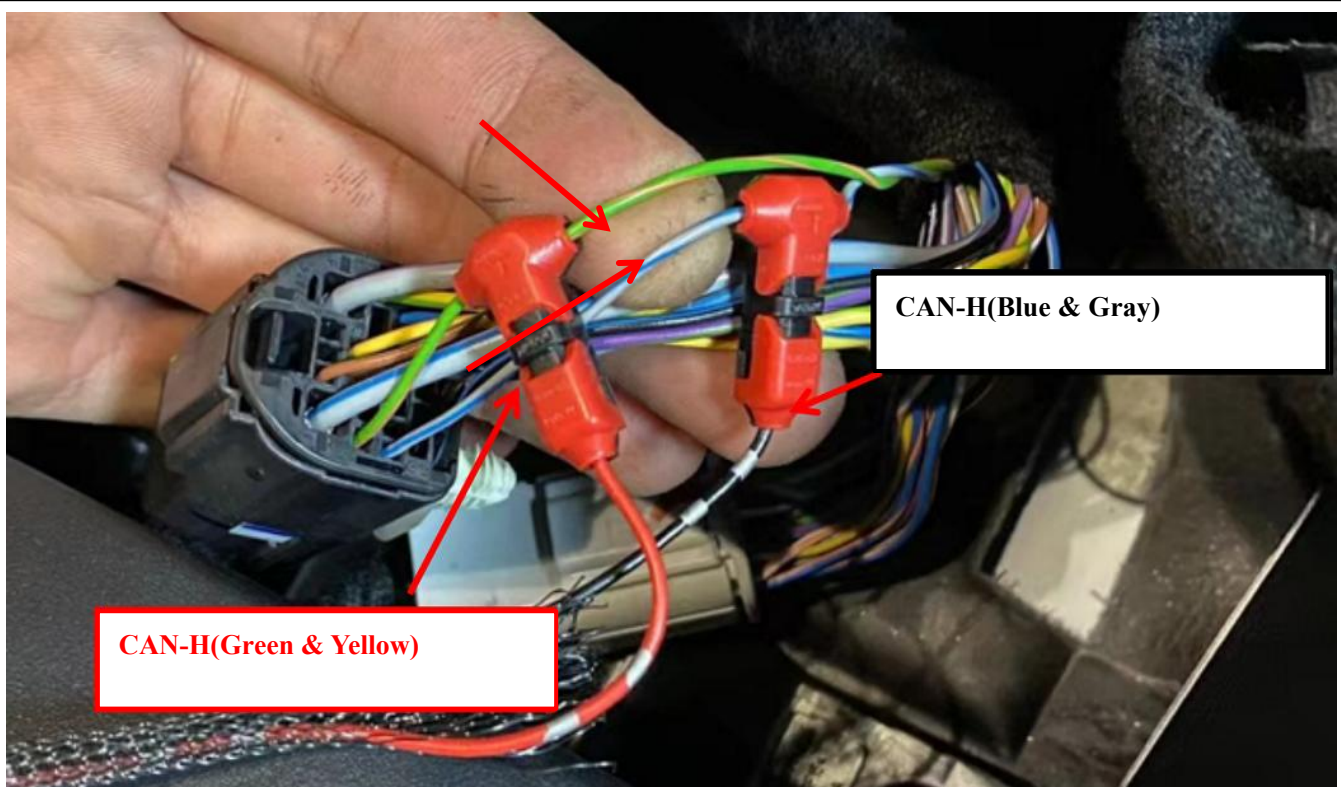
5. 1 Cut the plug below and connect the cable (red and black) to the car

using red cable clamp.



The pic below is the position of the connection of **2023+ Ranger**



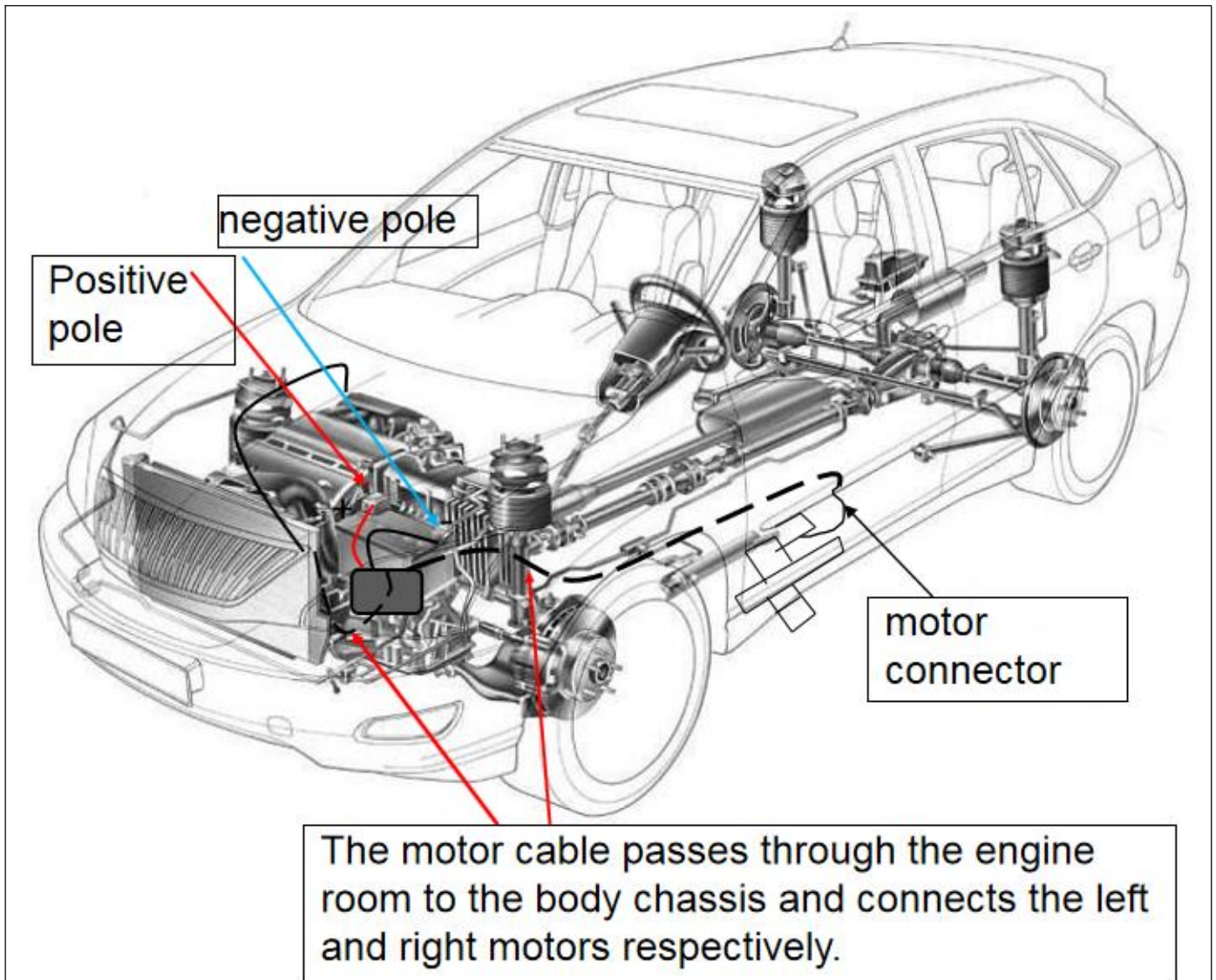


CAN-H(Green & Yellow)

CAN-H(Blue & Gray)

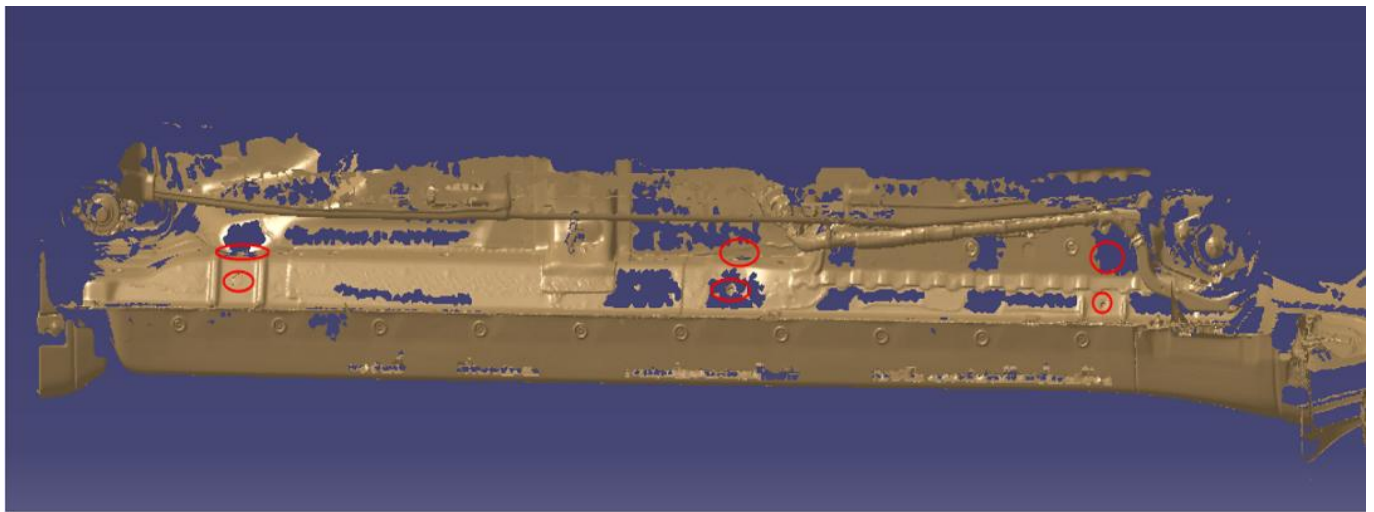
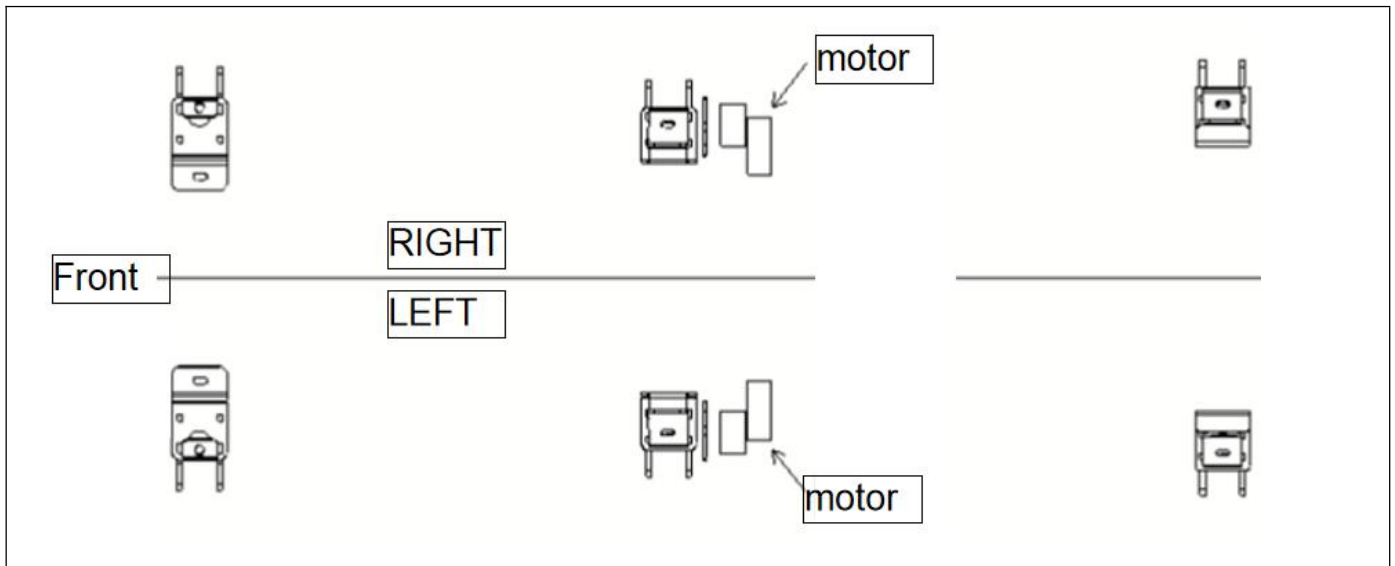
CAN-H to the red cable

CAN-L to the black cable



6. Installation

- 6.1 Refer to the accessories list to check whether the accessories are complete.
- 6.2 Distinguish the front, back, right and left sides of the bracket, Then place it in place with the fastener for improving the speed of installation
- 6.3 Insert the corresponding t-bolt into the plastic card respectively, In order to avoid the loading process can not be completed due to the wrong operation of t-type screws inserted into the car bottom plate.



6.4 Organize the string with tie tape ,Install the removed guard plate in its original position[If there is interference between the guard plate and the bracket, the interference part should be removed].

6.5 The installation is completed, check whether there is any omission in the above installation steps.

7.Disclaimer:

Installation must be carried out in accordance with this manual. The related problems and losses caused by improper installation and use are not covered by our warranty.