

Tailgate Central Locking Kit for TOYOTA HILUX REVO 2015+

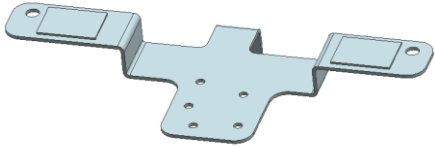
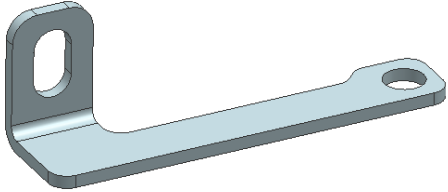
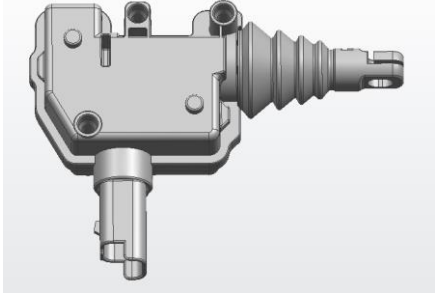


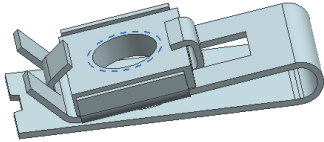
(With Key hole)

Installation Instruction




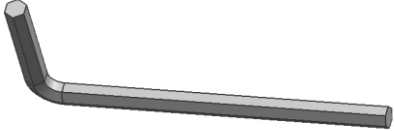

CAUTION:

1. The figures here are for reference only and may have slight differences with the actual product you received, however the installation method is the same.
2. Please read the instruction thoroughly for easy installation. This will also help you to avoid scratches or other potential damages to your car.

PART LIST:

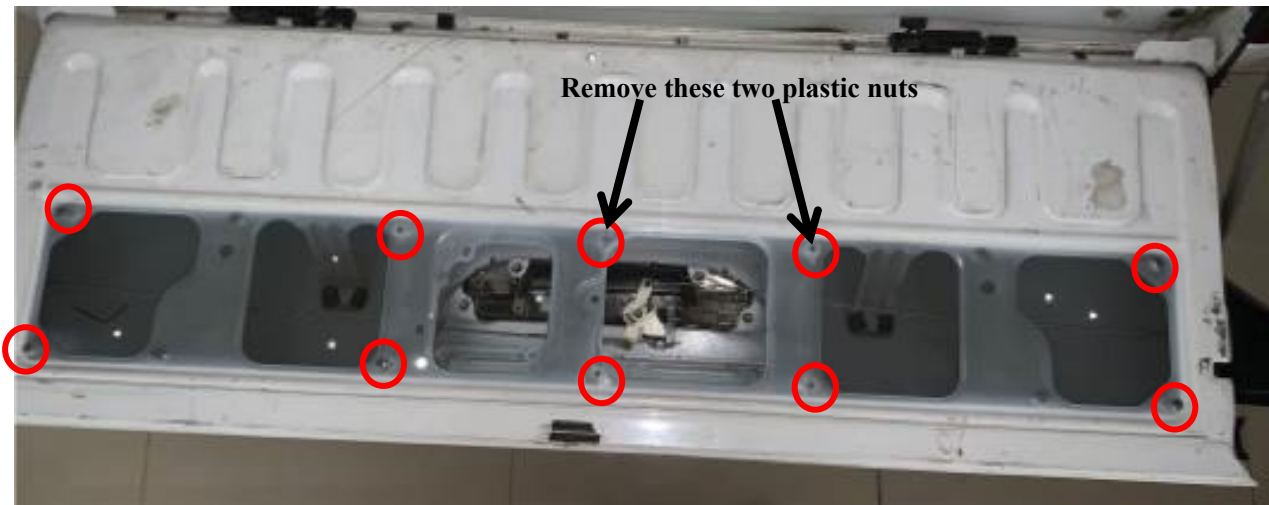
NO.	QTY	NAME	NO.	QTY	NAME
①	1	 Bracket 1	②	1	 Bracket 2
③	1	 Actuator	④	1	 Wire harness (Universal)
⑤	2	 T-Tap Splice Connectors (wire harness 0.2-0.5)	⑥	2	 Clip Nut M6

SKU: CLK-HLX-01
TAILGATE CENTRAL LOCKING KIT FOR TOYOTA HILUX REVO 2015+ (WITH KEY HOLE)

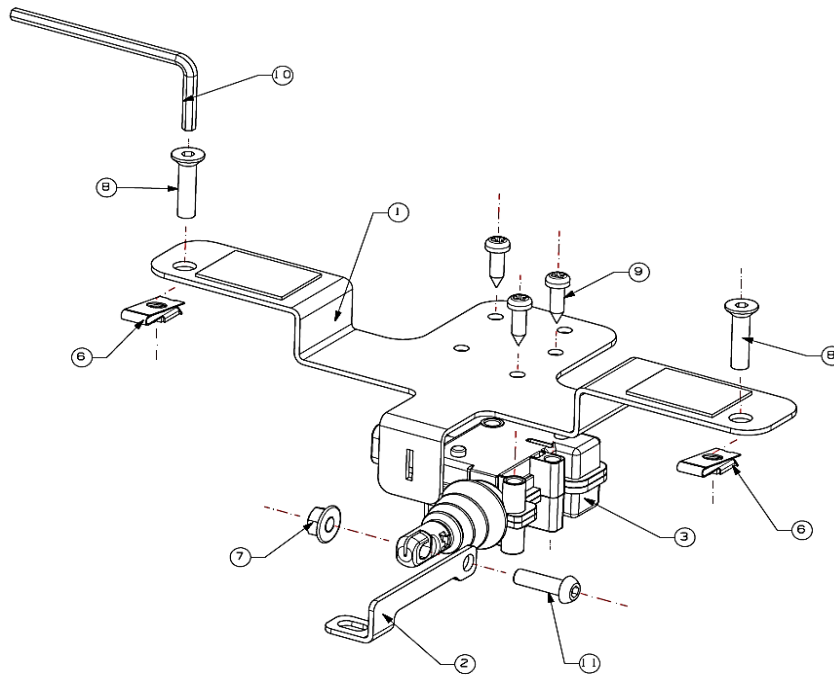
⑦	1	 Hex flange nut M6	⑧	2	 Countersunk bolt M6_25
⑨	3	 Phillip tapping screw ST4.8_16	⑩	1	 Allen Wrench S=4
⑪	1	 Hexagon Socket Button Head Screws M6_20			

STEP ONE: Brackets Installation:

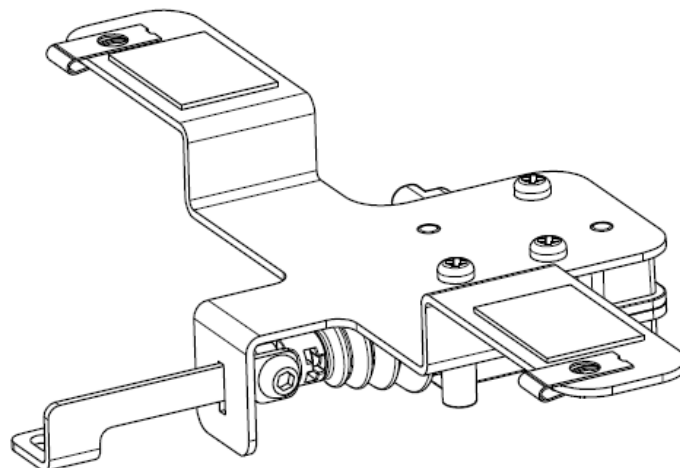
Remove the steel cover plate on tailgate by loosening the screws. Also remove the two plastic nuts, as below picture shows.



Installation Fig.



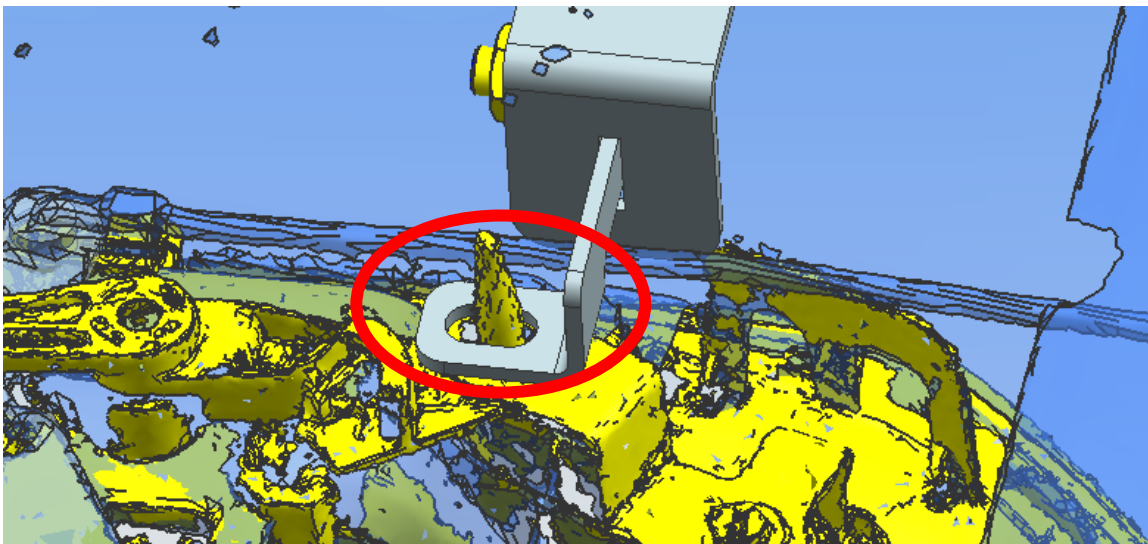
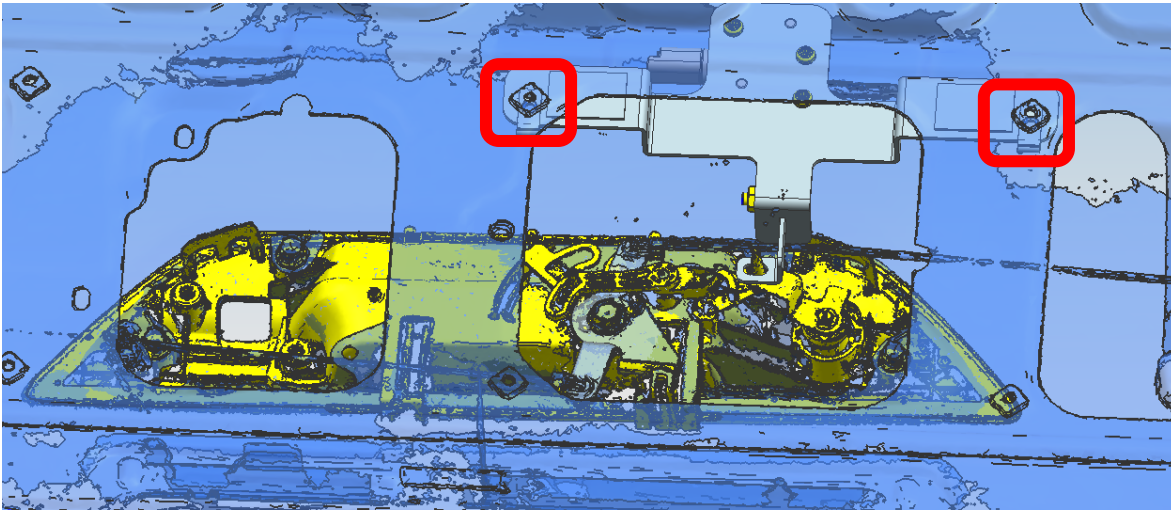
As below photo shows, install ① bracket 1, ② bracket 2 and ③ actuator with ⑨ ⑦ ⑪.



Then stick the bracket assembly inside of the tailgate, fasten it with ⑥ ⑦ ⑧.

Notice: As the picture below shows, bracket 2 should hold the OE lock bar before fasten the bracket assembly.

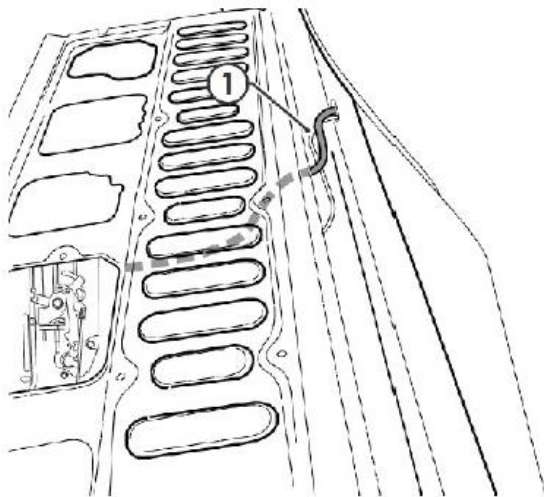
Please note that steel tailgate cover plate as well as some tub liners will use these 2x ⑧ bolts so replace these first before installing the 2x ⑧ bolts



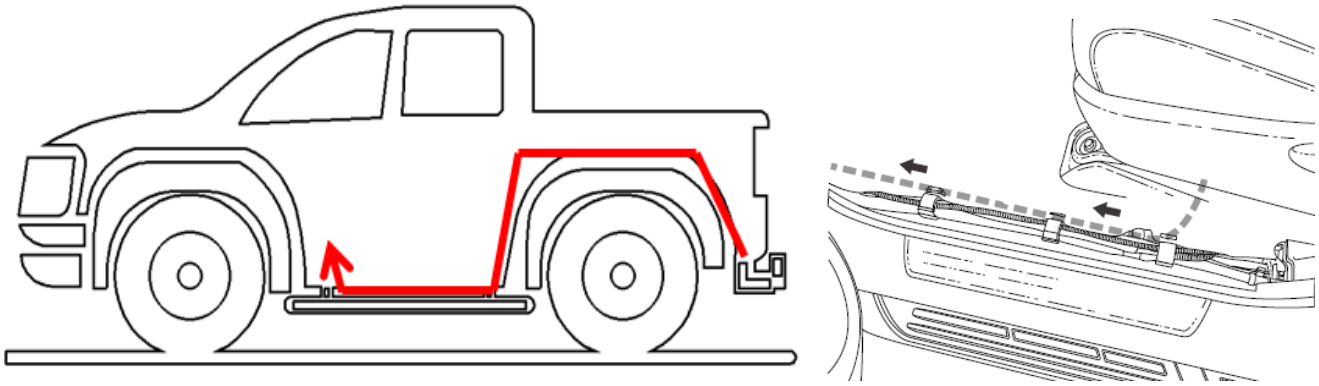


- Wiring harness connection:

1. Connect the wiring to the actuator the route the actuator wiring harness out of the tailgate and underneath the vehicle.



2. Route the wiring harness along the chassis rail to the passenger seat.



There is a grommet that can be accessed which will bring the wire out from underneath the passenger seat. The wiring harness can be pushed through the original hole of the grommet without making any new holes. This will ensure no water can get into the cab through this grommet when the vehicle is doing water crossings.

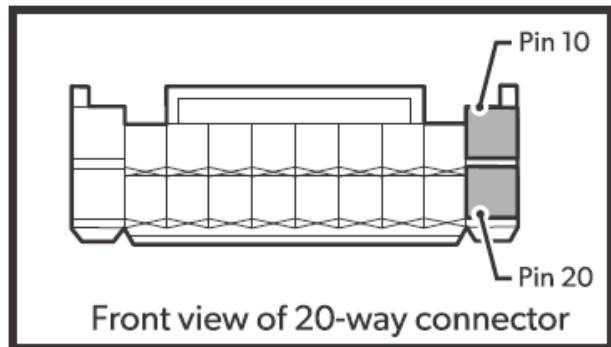
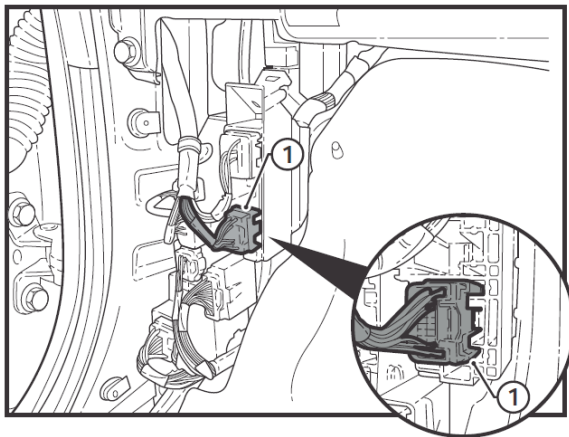
To do this, just strip back the electrical tape on the OEM harness and remove the conduit on this section of the central locking wiring harness. Push the harness through as shown below. Please ensure you retape the harness back up the same way so the harness is waterproof.



3. Remove passenger side kick panel. It is held in by 1 thumbscrew and 2 push in clips



4. Locate and disconnect the connector in the passenger side kick panel area. Find out the PIN 10 (black wire) and PIN 20 (white wire).



Front view of 20-way connector
Connector Pin 10: Lock / Black Wire
Connector Pin 20: Unlock / White Wire



- The two wires (red & black) on our product should be connected with the PIN 10 (black wire) and PIN 20 (white wire).
 STANDARD: Black wire on product connect with PIN 10 (Black wire);
 Red wire on product connect with PIN 20 (White wire)

But please test the function of the wire to see which wiring connecting is correct.¹

In order to test the wires, you must have all the doors closed or make the ECU think that all the doors are closed for the central locking system to work.

In the Hilux, there is a pressure-sensitive button that must be pressed down while testing. The test light will light up momentarily when the unlock/lock signal is pressed on the key fob. Each wire will only carry a lock or an unlock signal.

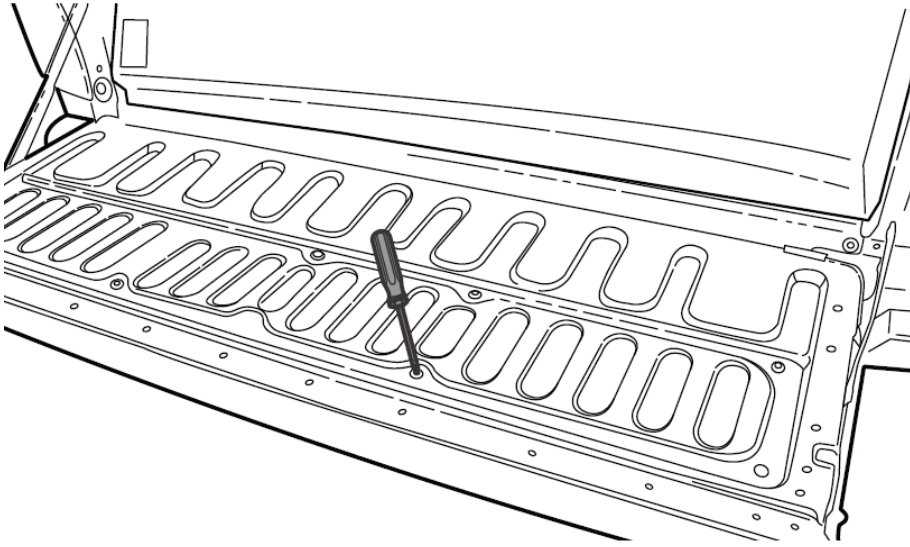


⑤ T-Tap Splice Connectors may be used but soldering is recommended. Insulate any connections with

¹ Some vehicle manufacturers may change wiring colours between year models so it is vital to double check each wire to avoid damage to the vehicle

electrical tape

6. Test the tailgate lock function with the remote control. Then secure the wires with cable tie under the chassis, reinstall the fender flare and tailgate cover.



Fitting complete.