

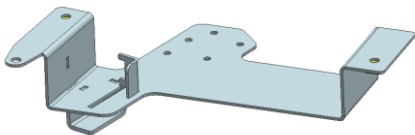
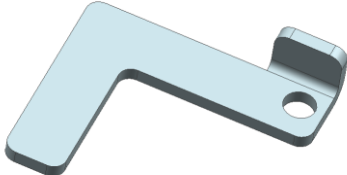
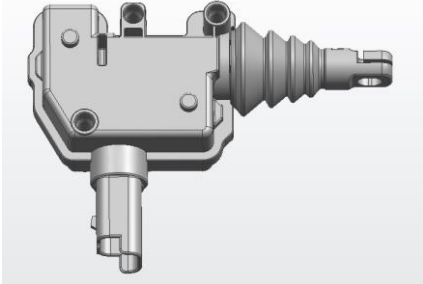


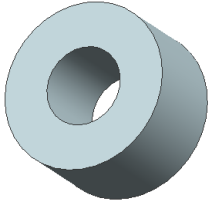


# Tailgate Central Locking Kit for TOYOTA HILUX REVO 2015+

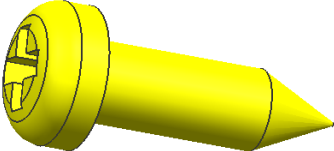
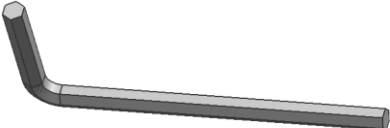

## (Tailgate with no keyhole)

**CAUTION:**

1. The figures here are for reference only and may have differences with the actual product you received, however they share the same assembly way.
2. Please read the instruction completely for easy installation, which will also help you to avoid scratches or other potential damages to your appealing car.

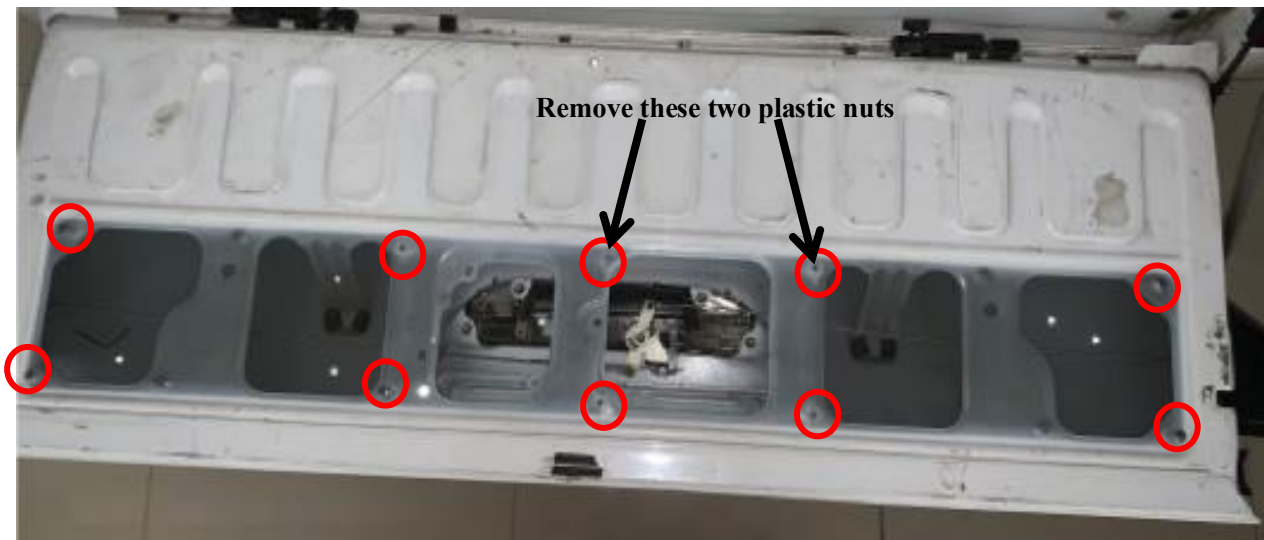
**PART LIST:**

NO.	QTY	NAME	NO.	QTY	NAME
①	1	 Bracket 1	②	1	 Bracket 2
③	1	 Actuator	④	1	 Wire harness (Universal)
⑤	2	 T-Shaped clamp (wire harness 0.2-0.5)	⑥	3	 Plastic spacer D8 (8*18*10mm)
⑦	2	 Hex flange nut M6	⑧	3	 Inner hexagon bolt M6_25

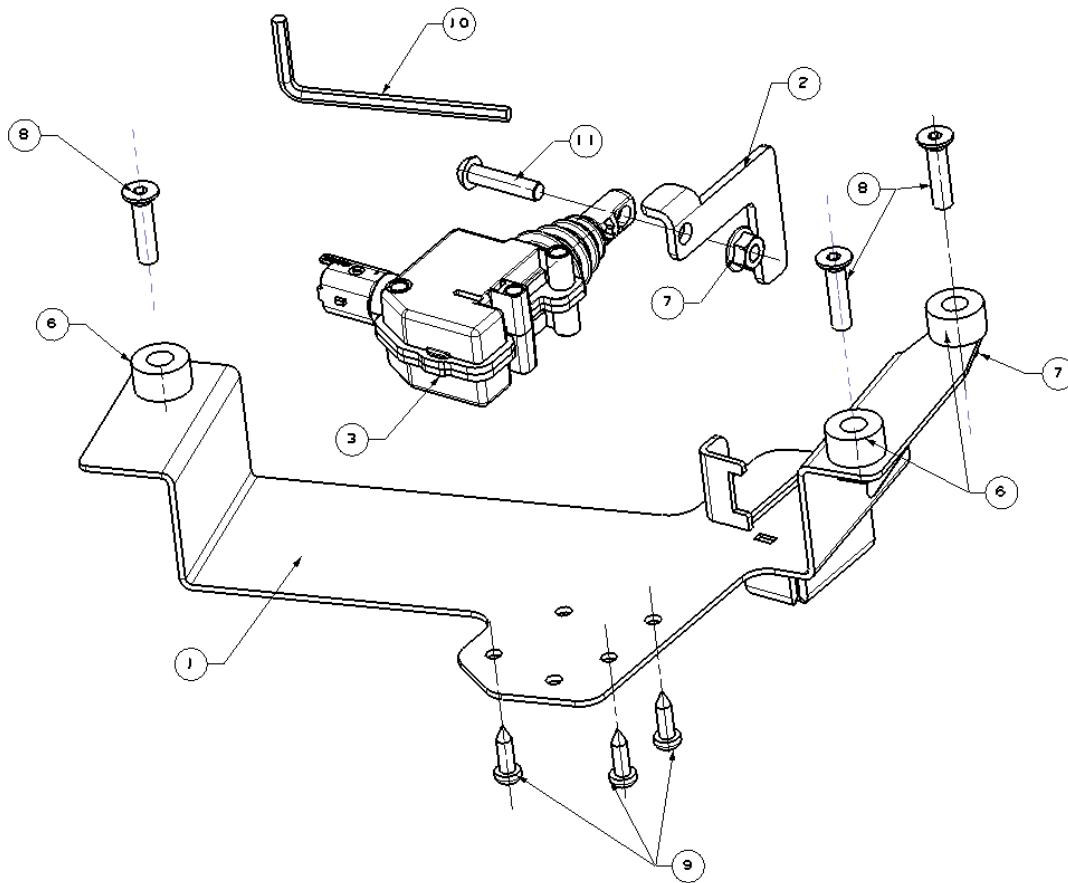
⑨	3	 Phillip tapping screw ST4.8_16	⑩	1	 Allen Wrench S=4
⑪	1	 Hexagon Socket Button Head Screws M6_25			

**STEP ONE: Brackets Installation:**

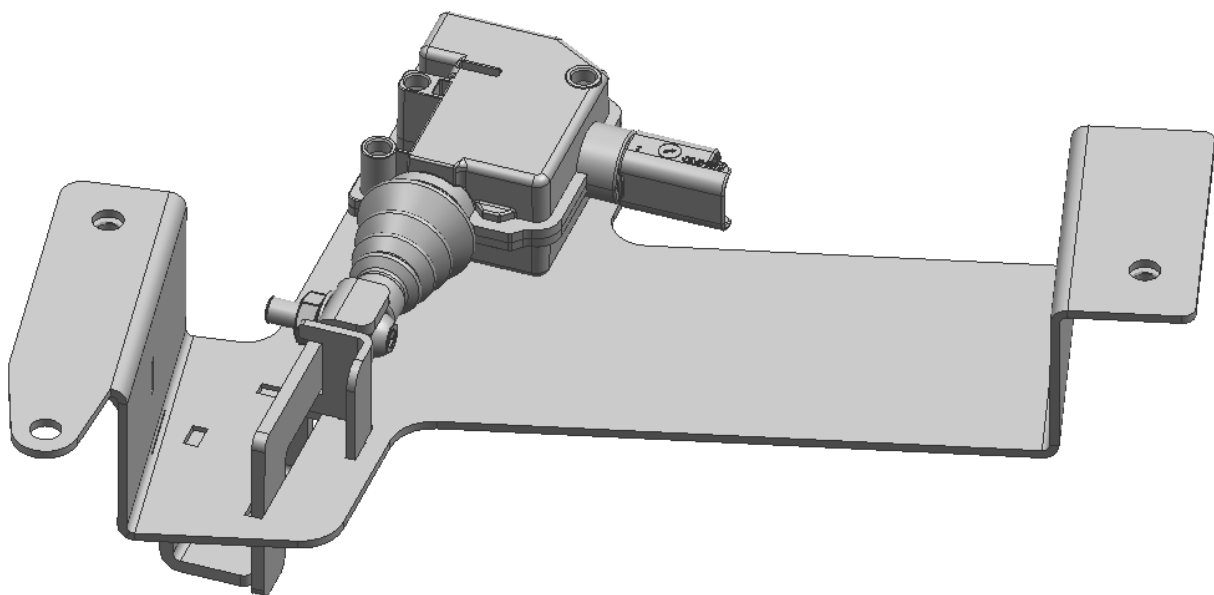
Remove the steel cover plate on tailgate by loosening the screws. Also remove the two plastic nuts, as below picture shows.



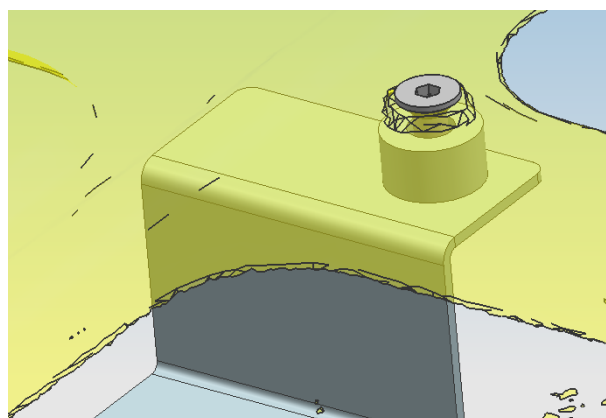
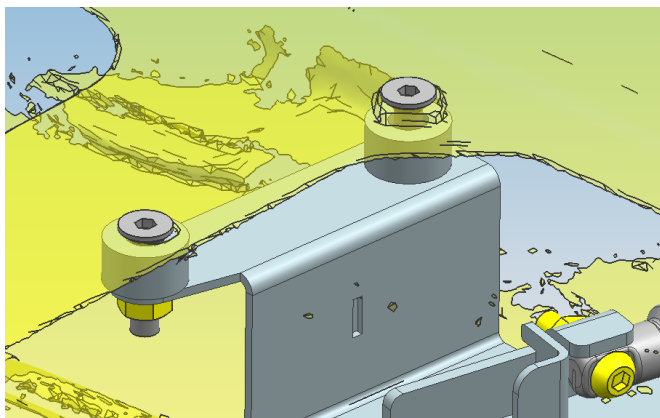
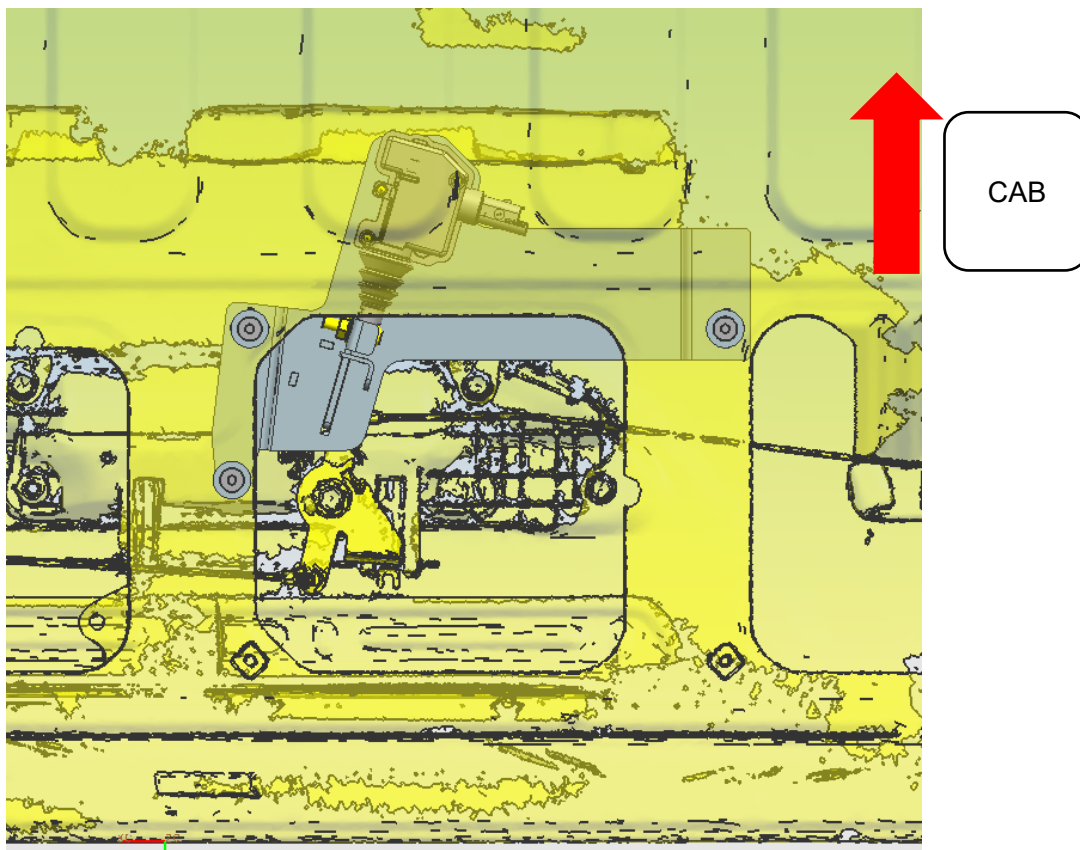
### Installation Fig.



As below photo shows, install ① bracket 1, ② bracket 2 and ③ actuator with ⑨ ⑦ ⑩.



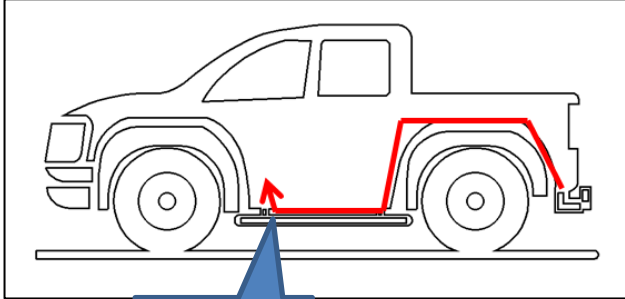
Then install the bracket assembly inside of tailgate, fasten it with ⑥ ⑦ ⑧. Pull the bracket 2 to whether the product runs smoothly.



Reinstall the steel cover plate on tailgate.

**STEP TWO : Wire harness connecting:**

1. Route the actuator wiring harness along the chassis rail to the grommet underneath the driver seat.
2. Secure the harness to the chassis rail with cable ties.
3. Cut a slit in the grommet, thread the actuator wiring harness through the grommet. Reseal the grommet with silicone sealant.
- 4.



**STEP THREE:** Test the E-tailgate lock function with the vehicle remote control.  
If everything is OK, then reinstall the cover plate on tailgate. Fitting complete.