

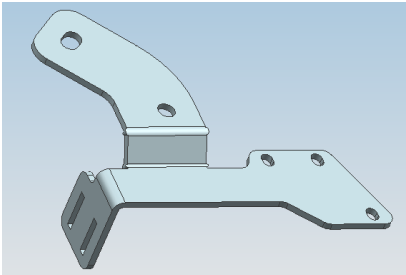
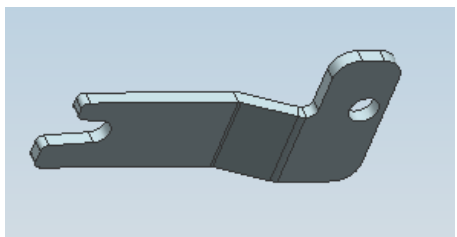
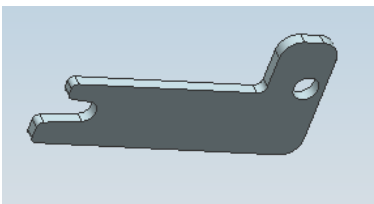
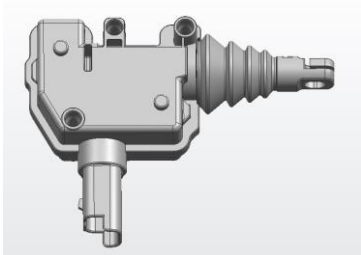

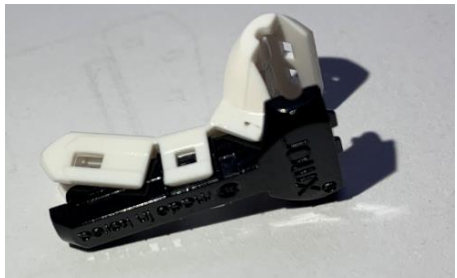
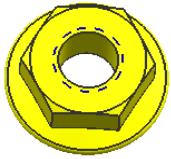

Tailgate Central Locking Kit for MITSUBISHI TRITON 2015-2021

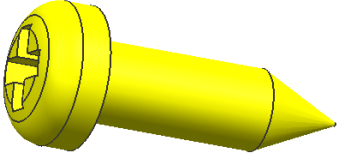

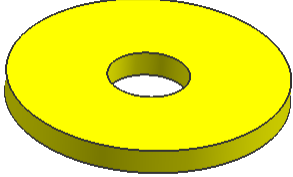
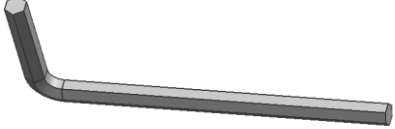
Installation Instructions

CAUTION:

1. The figures here are for reference only and may have differences with the actual product you received, however they share the same assembly way.
2. Please read the instruction completely prior to installation.

PART LIST:

NO.	QTY	NAME	NO.	QTY	NAME
①	1	 Bracket	②	1	 Unlocking plate (Small lock handle)
③	1	 Unlocking plate (Large lock handle)	④	1	 Actuator
⑤	1	 Wire harness (Universal)	⑥	2	 T-Shaped clamp
⑦	1	 Hex flange nut M6	⑧	3	 Hexagon Socket Button Head Screws M6_20

⑨	3	 Phillip tapping screw ST4.8_16	⑩	2	 Spring washer D6
⑪	2	 Large washer D6	⑫	1	 Allen wrench S=4

● Brackets Installation:

1. Start by removing the tailgate liner. This can be done by using a flat head screw driver to detach the plastic screw covers. Remove the 6 screws which hold the tailgate liner in place using a phillips-head screwdriver (See Figure 1,2,3 & 4).



Figure 1

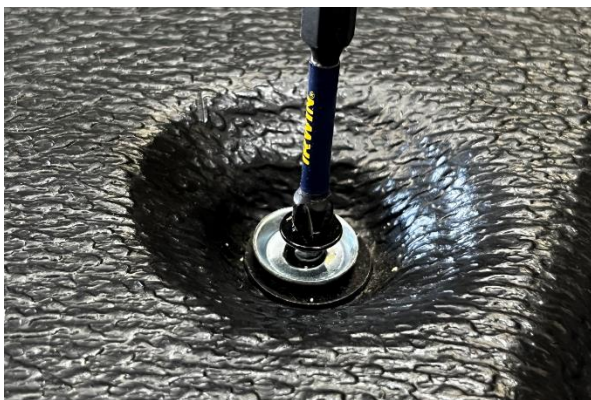


Figure 2



Figure 3



Figure 4

2. Remove the 2 screws of the original car to install the actuator. (See figure 5)

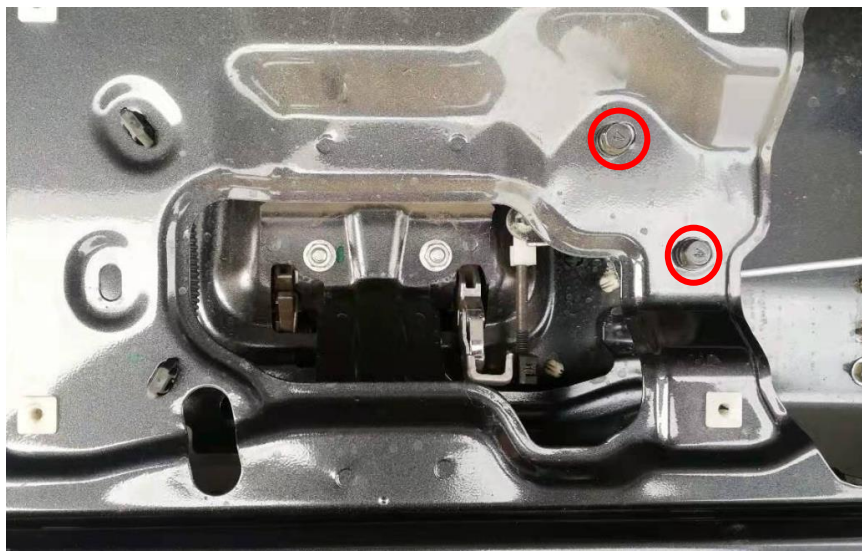


Figure 5

3. As below photo shows, install ② ③ ④ with ①. (See figure 6)

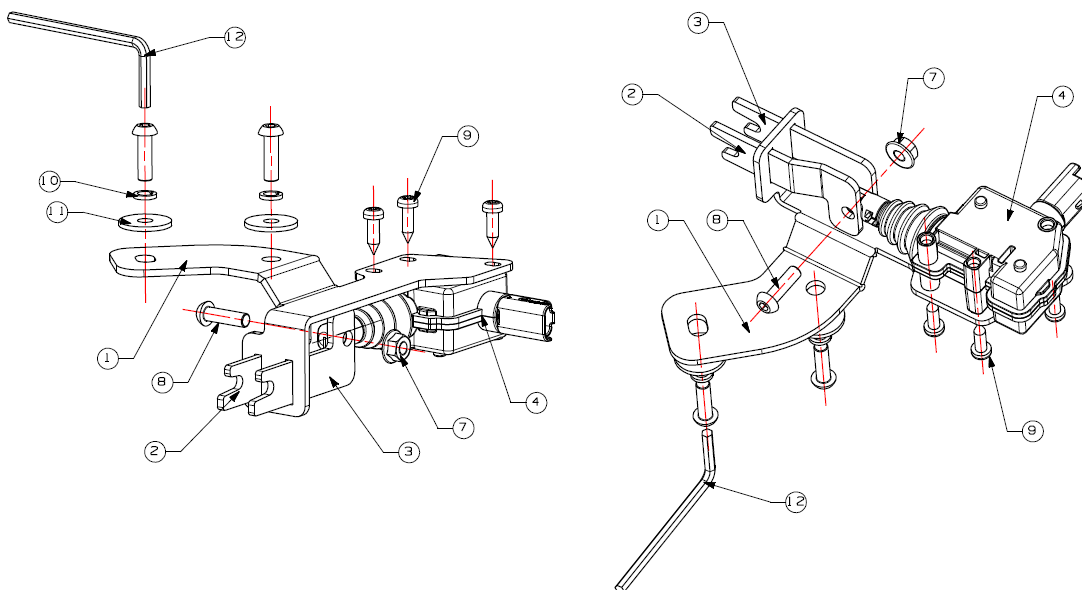
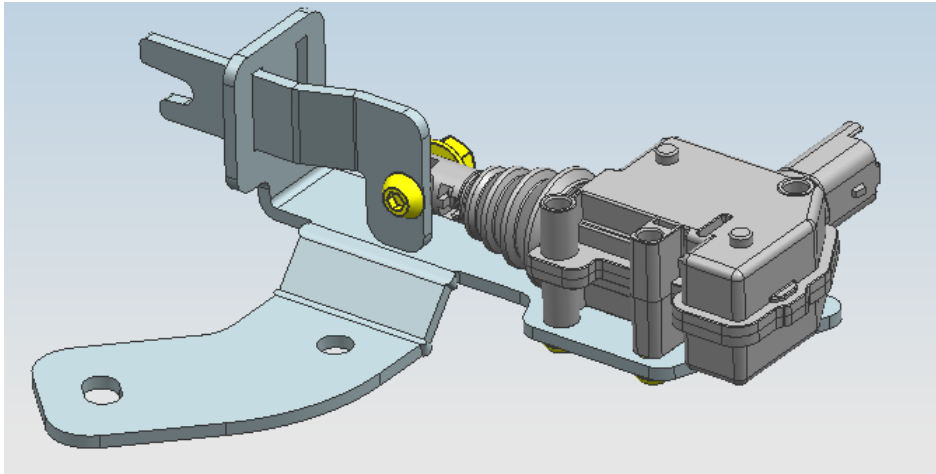
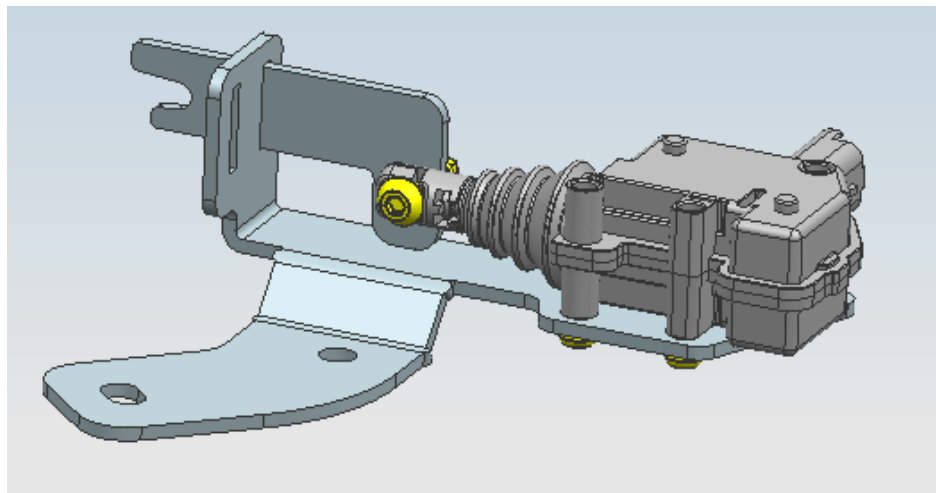


Figure 6

Install ② ③ ④ to ① with ⑨ ⑦ ⑧. After completion, as below photo shows:

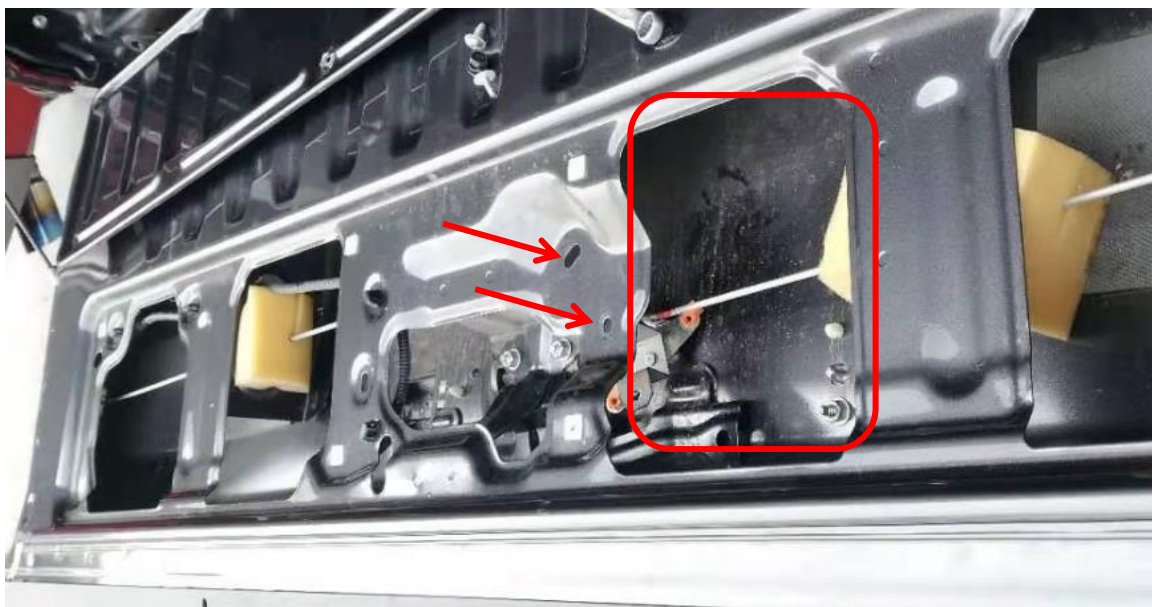


Unlocking plate (Small lock handle)

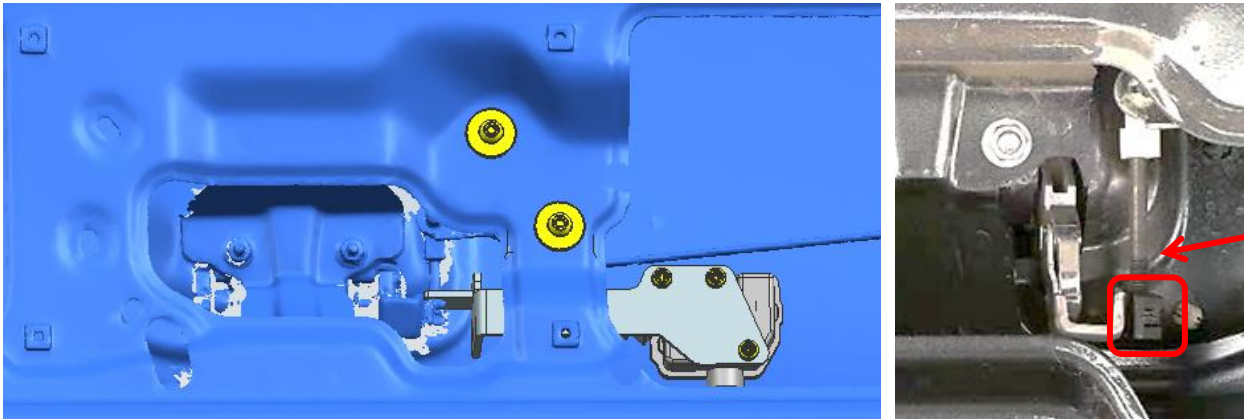


Unlocking plate (Large lock handle)

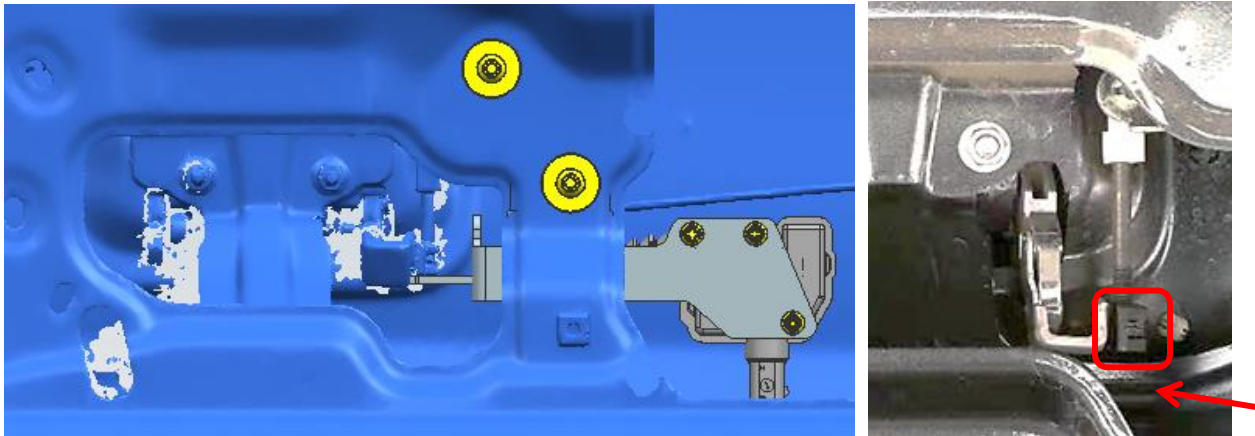
4. After assembling, insert ⑤ to the Actuator, and then extend the Actuator below the installation point of the arrow through the hole of the tailgate.



5. Install Actuator on the tailgate with ⑧ ⑩ ⑪; Note that the unlocking plate (Small/Large lock handle) are different:

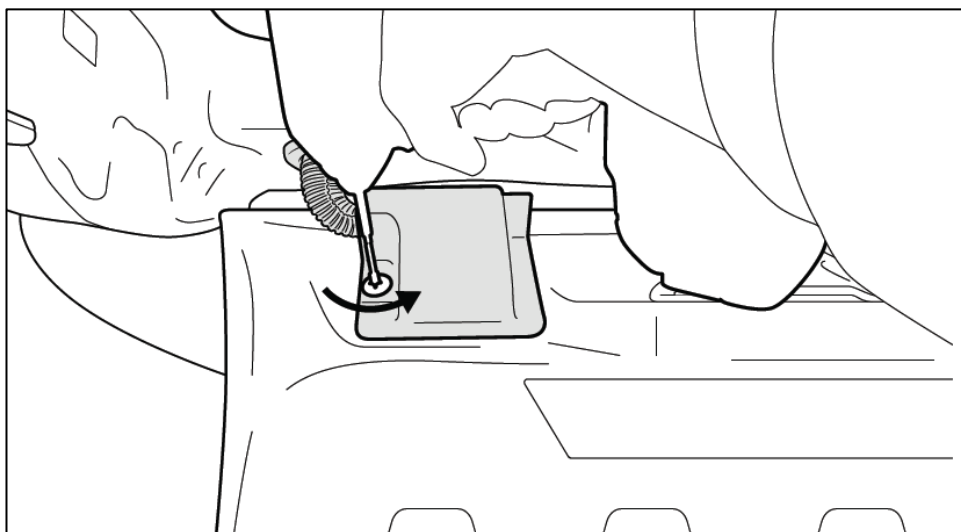


The unlocking plate (Small lock handle) is stuck on the black square on the side of the original car lock (as shown by the arrow above the red square)

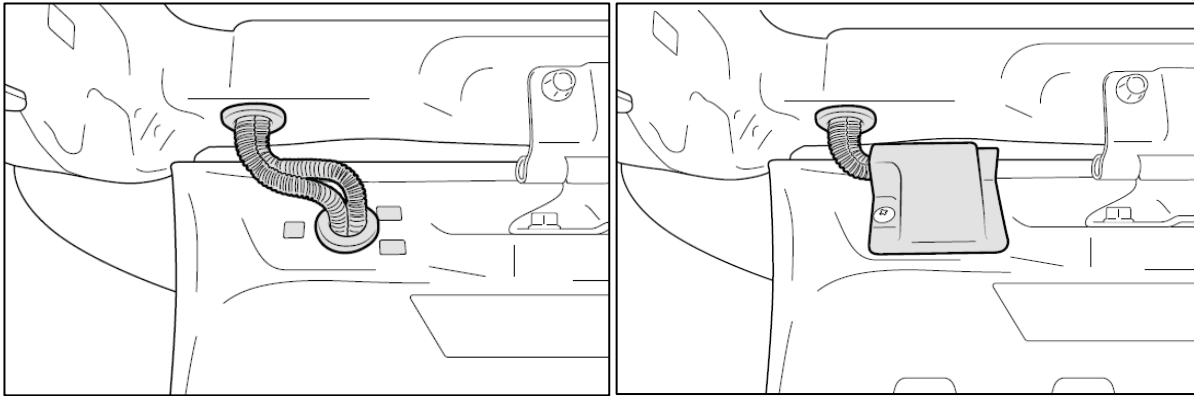


The unlocking plate (Large lock handle) is stuck on the black square on the side of the original car lock (as shown by the arrow below the red square)

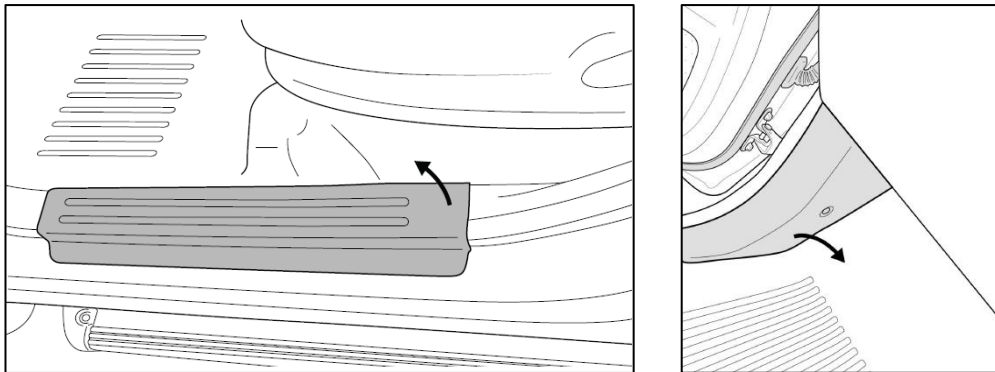
6. Remove the original car wiring cover, which is located on the left side of the tailgate, as shown in the figure below:



7. Pass the ⑤ through the trunk wiring hole and put on the cover.



8. Removal of running board and side panel on the driver's side for easy routing.



9. Run the wire from the tailgate through to under the car to under the front seat of the passenger side and locate the rubber grommet. Run the wire through the grommet to the inside of the cab. Continue running the wire under the carpet and into the a-pillar. (See figure 7)

ATTENTION!

- Keep wires away from moving parts and hot surfaces.
- Make sure to secure any loose wires with zip ties.



Figure 8

10. Using the table below, carefully strip, connect and solder the two Bossco 4x4 central locking harness wires (black and red) to the unlock and lock wires in the OEM harness. (See figure 9). Make sure to use electrical tape to insulate any exposed wires and secure any loose wires with zip ties.

In Bossco 4x4 test vehicle:

Function	OEM Harness	Central Locking Harness
Unlock	Blue wire – Red stripe	Red
Lock	Blue wire – Black stripe	Black

Please note that the OEM harness wire colours may vary with different models so it is crucial to re-test wires with each installation. It is essential to test the actuator function while the tailgate is down to ensure nothing is locked inside.

11. Refit all interior plastic trims and side panels carefully.

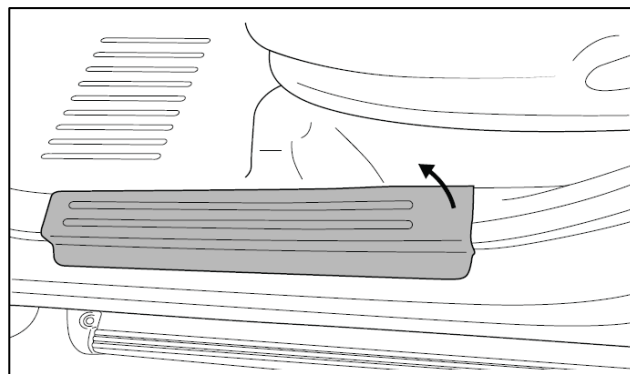


Figure 9

12. Use the screws removed in step 1 to put the cover back on the tailgate.

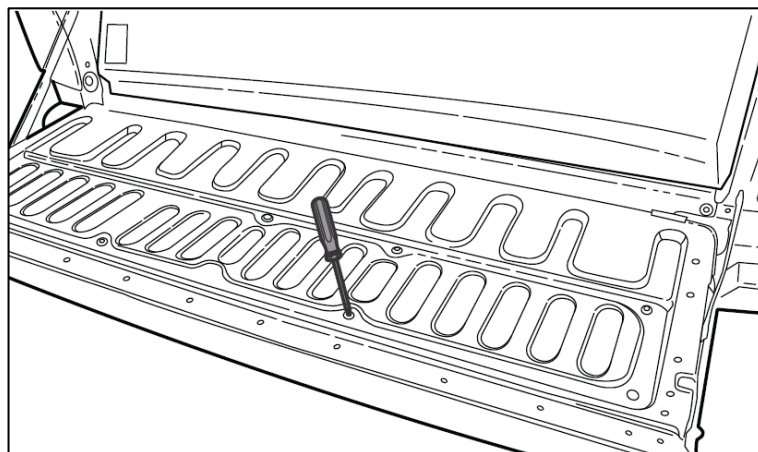


Figure 10